

Release Notes for Capture Pro Software

Version 2.5.6

Capture Pro Software Version 2.5.6 is a bug-fix release for Version 2.5 customers of Capture Pro Software. You can also upgrade directly to Version 2.5.6 from a Version 2.x installation of Capture Pro Software.

Version 2.5.6 is now available for download from the **Drivers and Downloads** page at www.kodak.com/go/kcsdownloads. If you have an active Service and Support Contract as part of your installation of Capture Pro Software, you can upgrade to and run this release as part of your Software Assurance at **no additional charge**.

To install, download the installer (**CapturePro_Rel_256.exe**) file to your PC and run it. The installer will automatically upgrade your existing Capture Pro installation to Version 2.5.6.

Fixes and Enhancements in Version 2.5.6:

Support for the KODAK i1405 Scanner

- Version 2.5.6 fully supports the new KODAK i1405 Scanner. Default Page Setups and Scanner Settings profiles are now included in Version 2.5.6.
- All new KODAK i1405 Scanners are now shipping with install software Version 2.13. If you have a new i1405 Scanner or have upgraded your i1405 scanner software to Version 2.13, **you must also** ensure that you are running with Version 2.5.6 of Capture Pro Software .

Auto Import and Manual Import

- Group 3 Fax images (TIFF file format) can now be auto-imported into batches and displayed in Capture Pro Software. In previous releases, while Group 3 Fax images could be manually imported (**Capture->Manual Import Images** menu option), the same images would not be processed or displayed when placed into a Hot Folder for Auto Import.
- When Auto Import is configured as the selected “scanner” or capture source, the ability to manually import images into a batch was not allowed. This has been corrected in Version 2.5.6. You can now manually import images into a batch, as a post-scan editing function when the system is configured for Auto Import.

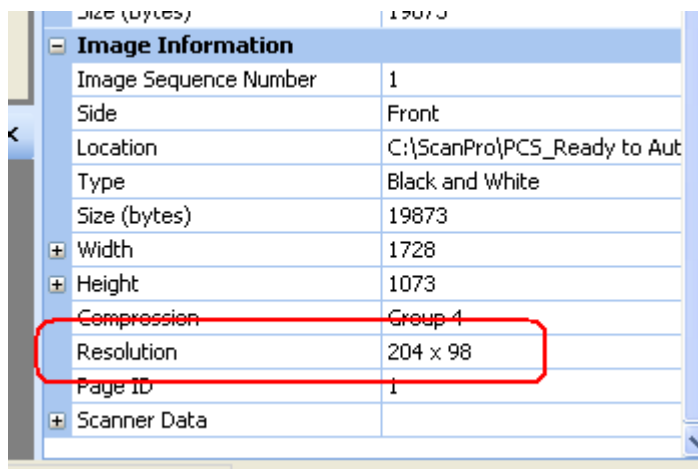
Rescanning Back (or Rear side) Images with a Flatbed

- Prior to Version 2.5.6, you could not select a Back (or Rear side) image for Rescan and use a Flatbed scanner (or the Flatbed accessory on KODAK scanners) to perform the Rescan. The flatbed scan would actually occur but the image selected for Rescan would not get replaced.

This problem has been corrected in Version 2.5.6.

Main Screen Display and Post-Scan Editing

- Images with a different horizontal and vertical resolution (e.g., 200 DPI by 100 DPI) were not displaying properly in Capture Pro Software. These images, typically imported from another source (e.g, Group 3 Fax Server) would look squashed or stretched in the main screen image display of Capture Pro Software. All areas of image display in Capture Pro Software have now been corrected to properly display images of a different horizontal and vertical resolution:
 - Main screen display
 - Remove Blank Images display
 - Bar Code/OCR Setup display
 - When images of a different horizontal and vertical resolution are copied into Job Setup, Capture Pro would crash on Windows 7 64-bit systems when a user attempted to enter Job Setup.
 - Capture Pro Software would crash when attempting to view a rotated image (with a different horizontal and vertical resolution) in Bar Code/.OCR Setup.
- Post-scan editing operations (e.g., Rotate, Crop, Blank) were not working properly on images with a different horizontal and vertical resolution. This has also been corrected in Capture Pro Software version 2.5.6.
- The **Information** window display of the Image Resolution has been modified to correctly display the resolution of images that have a different horizontal and vertical resolution. For example, a 200 dpi (horizontal) by 100 dpi (vertical) image may now display like the following:



SharePoint Output

- SharePoint output would fail if any index field value contained an “&” character within its value.
- SharePoint output would fail if an optional index field in Capture Pro was empty and did not have a value.

Both of these problems have been corrected in Version 2.5.6.

Output

- Imported images that have a different Horizontal and Vertical resolution (e.g., 200 DPI by 100 DPI) do not output correctly to PDF format. The images in the PDF file will appear as squashed or stretched in the Acrobat Viewer. This problem has been corrected in Version 2.5.6.

Please note that images output in PDF/A or Searchable PDF format did not have this problem.

- Single-Page PDF/A output was not compliant with the PDF/A-1a or PDF/A-1b specifications. This problem has been corrected in Version 2.5.6

Please note that multi-page PDF/A output did not have this problem.

- The **HVCS 16-bit** format option for outputting an Image Index file was not in exactly the same format and content as an HVCS 16-bit image index file produced by legacy Capture Software 6.x. This problem has been corrected in Version 2.5.6.

Trial Edition Installations

- Unable to perform OCR functions or Searchable PDF output (i.e., attempting to output documents in Searchable PDF format would immediately fail the output) in Capture Pro if the Trial Edition is uninstalled after installing the full licensed version of Capture Pro. Attempting to output documents in Searchable PDF format would immediately fail with the following error message:

"#Failed to output as file (1).#Initialize OCR engine failed."

- Similarly, attempting to Copy and Image to Job Setup (for bar code and OCR zone definition) would not work if the Trial Edition is uninstalled after installing the full version of Capture Pro.

(Note: These same problems would also occur when uninstalling the full license version after installing the Trial Edition).

Both of these problems have been fixed in Version 2.5.6.

Release Notes for Capture Pro Software

Version 2.5.0

To install, download the installer (**CSPProRel_250.exe**) file to your PC and run it. The installer will automatically upgrade your existing Capture Pro installation, if you have one, to Version 2.5.0.

Changes/Enhancements in Version 2.5.0:

Operating System Support

- Capture Pro Software is now certified on the Windows 7 operating system. The full list of supported OS's is now the following:
 - Windows XP (32-bit) SP2 and SP3
 - Windows XP (64-bit) SP2
 - Windows Vista (32-bit) original and SP1
 - Windows Vista (64-bit) original
 - Windows 7 (32-bit)
 - Windows 7 (64-bit)
- **Important:** When installing Capture Pro Software on a **Windows 7 PC** that will be part of a multi-user installation (i.e., the Job Setups and scanner settings will be kept in a network location and shared amongst the Capture Pro workstations), the installation program will be unable to browse to or access network locations (either via mapped drive or UNC location).

As a result, a workaround involving manually editing the Capture Pro Software ENV.INFO file must be done. **Please contact your local Kodak Service representative** for instructions on how to implement the workaround.

Additional Scanner Support

- The following new KODAK Scanners are now supported:
 - i1405 – Group C
 - i4200 – Group DX
 - i4600 – Group E
- **Notes:**
 - ▶ Group DX is a new Group that lies between Group D and E
- The new Kodak/Bell&Howell Truper Scanners are now supported:
 - Truper 3210 – Group D
 - Truper 3610 – Group D
- Other new models from non-Kodak scanner vendors that are now supported:
 - Panasonic 1045 - Group B
 - Panasonic 7075 - Group D
 - Xerox DocuMate 765 - Group D
 - Fujitsu fi-6800 - Group F

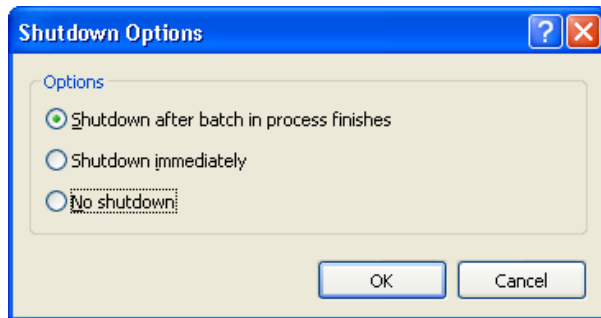
User's Guide Translations

- The Capture Pro Software User's Guide is now available in 5 languages: [English](#), [Brazilian Portuguese](#), [German](#), [Japanese](#), and [Spanish](#).
- The User's Guide can be downloaded from the **User Manuals** tab on the Capture Pro Software Support page:

<http://www.kodak.com/go/captureprosupport>

Bypass Shutdown Options

- When exiting Capture Pro Software, the **Shutdown Options** dialog will now be automatically bypassed as long as there are no batches currently being processed or queued up for output processing. As a result, the software will shut down without requiring any user intervention.



- **Note:** The Shutdown Options will be displayed, requiring a user response, if there were any batch processing errors encountered during the Capture Pro Software session.

PDF File Import

- PDF files can now be imported into batches in Capture Pro Software. Both **Manual Import Images** and **Auto Import** have been updated to support PDF file import.
- Both Multi-page PDF and Single-page PDF files are supported.
- **Notes:**
 - PDF file import will be about 1/3 slower than TIFF or JPEG file import. For example, depending on the speed of your PC and your Job Setup configuration:
 - ▶ 200 DPI Black & White compressed TIFF images can be imported at a rate of about 360 – 450 images per minute. Equivalent Black & White PDF files can be imported at a rate of 120 – 150 images per minute.
 - ▶ 200 DPI Color JPEG images can be imported at a rate of 90 to 180 images per minute. Equivalent Color PDF files can be imported at a rate of 30 to 60 images per minute.
 - Imported PDF files will always be rendered as 300 DPI images in a Capture Pro batch, regardless of the original resolution of image PDF files.

Intelligent Mail Barcode Support

- Capture Pro Software Version 2.5 now supports the US Postal Service bar code called IMB or Intelligent Mail Barcode. Also known as the Four State Barcode (FSB), the IMB bar code that is supported in Capture Pro Software contains 65 lines:



- **Note:** When first drawing a zone around an IMB bar code in Job Setup, Capture Pro will not read the bar code. You must select “Intelligent Mail Barcode” from the bar code type list box and then the IMB bar code will read successfully.

Key Data Entry Indexing – Last Value

- Now when manually entering index data via key data entry (or Drag n’ Drop OCR), the last value entered for an index field can now be carried over to the next and subsequent documents in the batch.
- To enable this new feature, the Default Value for the index field must be set to “Last Value”,

☒ Check field during scanning

Default value:

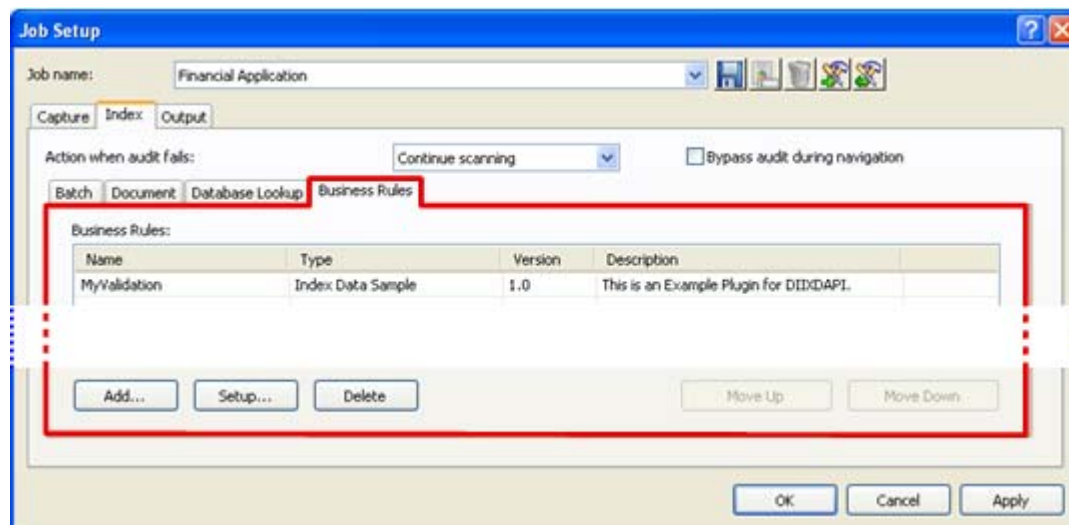
Input format:

Default Value Setup

Predefined values:	Default value formula:
Date (ddMMyy)	<input type="text" value="<app.lastvalue>"/> <input type="button" value="Add Item"/>
Date (MMddyy)	
Julian Date (yyDDD)	
Time (am/pm)	
Time (AM/PM)	
Time12 (hhmmss)	
Time24 (HHmmss)	
Station ID	
Station name	
Job name	
User name	
Batch process path	
Workgroup path	
Page setup	
Import File Name	
Batch name	
Document ID	
Document ID(0..)	
Document type	
Page ID	
Page ID(0..)	
Last value	

New Index Data API

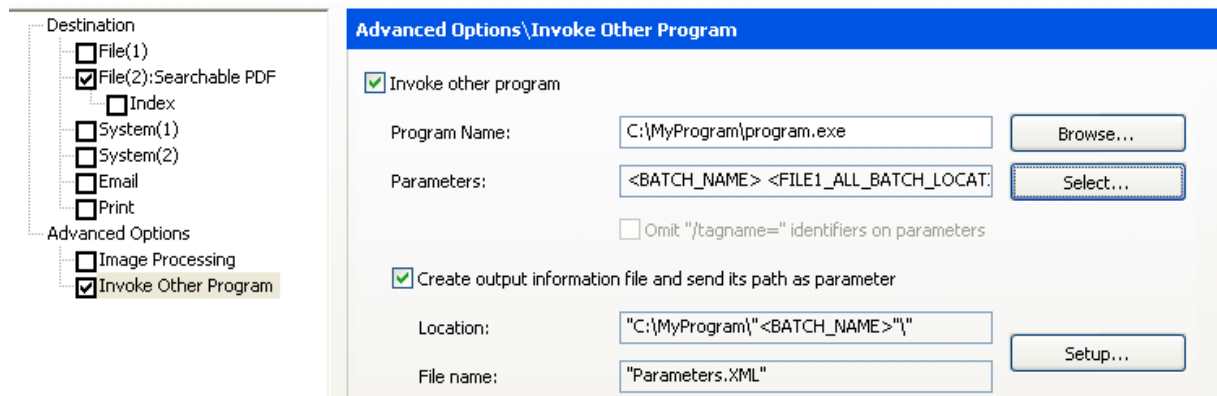
- The scope of implementing custom indexing logic has been expanded beyond just one index field at a time. A new indexing API, called the **Index Data API**, has been added for custom integrations that require access to all index data fields, e.g., cross-validation of index data.
 - **Note:** The existing **Index Type API**, used for custom validations of one index field, is still supported.
- The new API allows integrators to:
 - Create custom business rules and error messages
 - Use the content of one index field to validate another index field
 - Use the content of one index field to populate another index field
 - Conditionally change the properties of index fields (e.g., make a field “Read-only” or “Hidden”).
- When a custom Index Data validation is present in a Capture Pro Software installation, a special **Job Setup** tab becomes available:



- Detailed API specifications and sample source code for the new Index Data API are available on the Capture Pro Software DVD media for Version 2.5 or by contacting **your local Kodak representative**.

Invoke Other Program – Enhancements

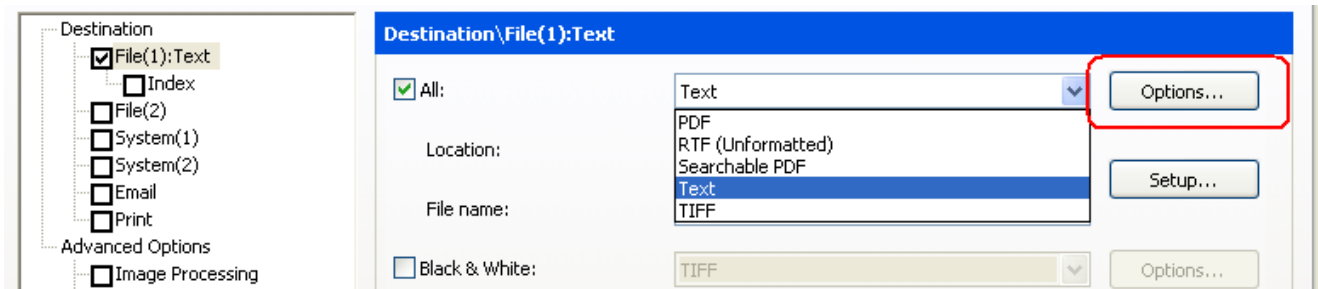
- The current **Invoke Other Program** functionality has been expanded to give an external program full details about output batches and associated index data.



- Click on the **Select** button to specify the parameters that will be needed by the external program to perform additional output processing outside of Capture Pro Software.
- If the option **Create output information file** is enabled, an XML file will be generated that will contain all of the selected parameters. The path to this file will be passed to the invoked program as the only parameter.

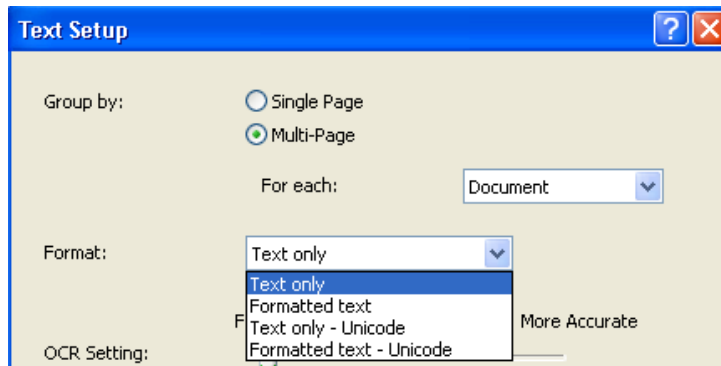
RTF and Text File Output

- New output options that utilizes full-text OCR processing to generate RTF or Text file output in addition to Searchable PDF



- Click on the **Options...** button to configure the RTF or Text file output. See the section below entitled **New and Improved Full-Text OCR Output** for a description of the options.
- Note that the RTF output is **unformatted** meaning that text formatting (such as **bold**, *italic*, or underline) in the original scanned source document is not maintained.
- The main difference between Unformatted RTF and regular Text output is that in Unformatted RTF, bitmap images (e.g., pictures, tables, and other graphics) that exist in the original scanned image are kept and will appear in the output file.

- **Text** output has additional formatting options



- Whereas **Text only** is just a continuous stream of words and sentences found by the full text OCR engine, **Formatted text** includes items such as Page Break indicators, spacing, indentation, and line feeds. The following example highlights the differences:

Formatted text example

PERFORMANCE APPRAISALS

Newly hired employees will receive performance appraisals once a year, or as otherwise indicated in the employee's offer letter. Thereafter, all employees will receive annual performance appraisals on or near their anniversary date.

Performance appraisals are intended as a source of communication between you and your supervisor. These reviews are intended to evaluate your performance, define mutually agreed upon goals, commend your strengths and point out areas for improvement and development. (A copy of the Company's performance review document will be distributed to you.)

In addition to the regular performance appraisals described above, special written performance evaluations may be conducted by your supervisor at any time to commend you for outstanding performance, or advise you of the existence of performance or disciplinary problems.

Text only example

```

~
~
PERFORMANCE APPRAISALS]
Newly hired employees will receive performance appraisals once a year,
or as otherwise indicated in the employee's offer letter. Thereafter,
all employees will receive annual performance appraisals on or near
their anniversary date.
Performance appraisals are intended as a source of communication between
you and your supervisor. These reviews are intended to evaluate your
performance, define mutually agreed upon goals, commend your strengths
and point out areas for improvement and development. (A copy of the
Company's performance review document will be distributed to you.)
In addition to the regular performance appraisals described above,
special written performance evaluations may be conducted by your
supervisor at any time to commend you for outstanding performance, or
advise you of the existence of performance or disciplinary problems.

```

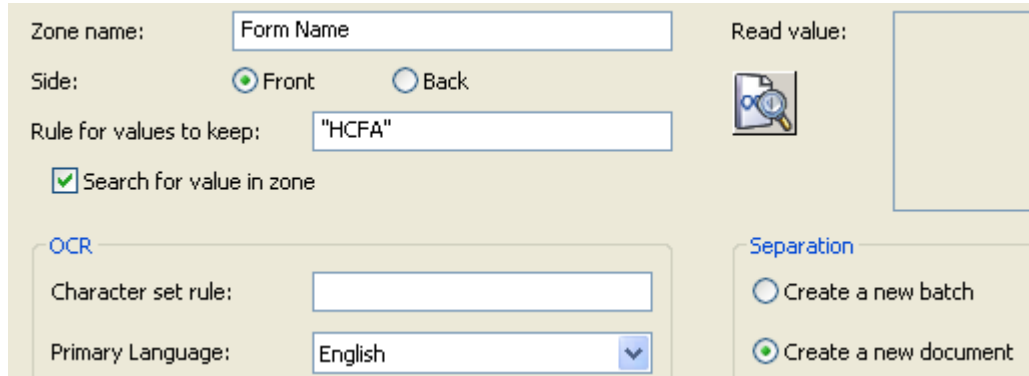
New and Improved Full-Text OCR Output

- For both Searchable PDF output, as well as RTF and Text only output, there are new options for configuring the full-text OCR processing:

- OCR processing can now be optimized for Speed or Accuracy, depending on the quality of your scanned original documents. There are now five (5) **OCR Settings** that are selected by a slider bar control. In previous versions of Capture Pro Software, only the “Faster” setting was available.
- For documents with mixed language content (e.g., English and Russian), the OCR recognition rate can now be improved through the selection of a **Primary and Secondary Language**.
 - A **Secondary Language** can not be selected when the **OCR Setting** is set to the “Fastest” setting. The slider bar must be moved to the right in order to specify a secondary language.
 - Secondary Language support is not available for the Asian languages (i.e., Chinese, Korean, and Japanese).
 - ▶ If the Primary language is set to an Asian language, then the Secondary language selection is disabled.
 - ▶ Furthermore, when a non-Asian language is selected as a Primary language, the Asian languages are not available for selection as a Secondary language.
- To further improve OCR accuracy, a **Custom Dictionary** may be used to recognize unique or unusual words that appear in your document set. For steps on how to create a custom dictionary, click on the Help or “?” icon on the setup dialog for Searchable PDF (or Text/RTF) output and navigate to the Help topic link entitled *Using Custom Dictionaries*.
- There may be cases where selected images (e.g., Terms and Conditions statement on the back of forms) do not need to go through full-text OCR processing and be included in the output PDF or Text files. Enter an **Output Range** to control which images of each document in the batch to output.

Zonal OCR Improvements

- In addition to **Secondary languages** and **Custom dictionaries** (as described in the previous section), Zonal OCR (for on-the-fly indexing during scanning) has the following additional capability:



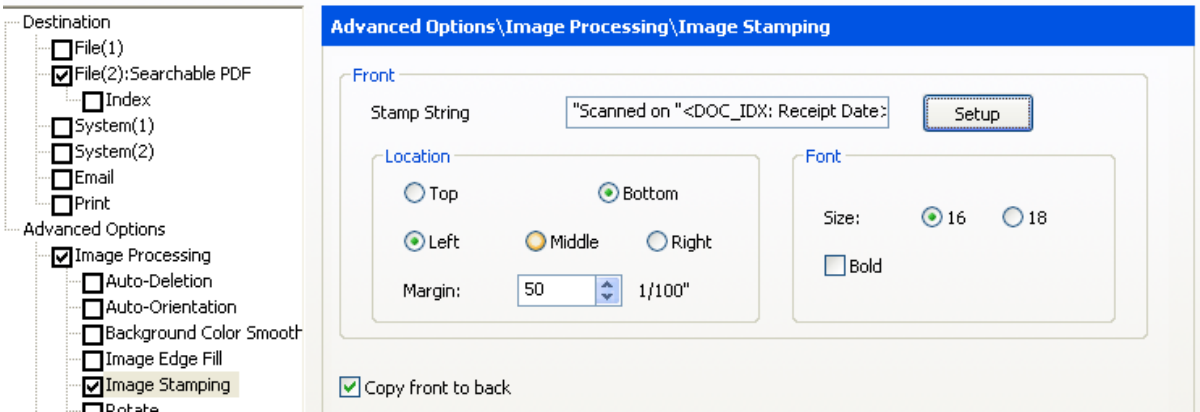
The screenshot shows a software configuration window for Zonal OCR. It is divided into several sections:

- Zone name:** A text box containing "Form Name".
- Side:** Two radio buttons, "Front" (selected) and "Back".
- Rule for values to keep:** A text box containing "HCFA".
- Search for value in zone:** A checked checkbox.
- Read value:** A large empty rectangular box on the right side.
- OCR section:**
 - Character set rule:** An empty text box.
 - Primary Language:** A dropdown menu showing "English".
- Separation section:**
 - Two radio buttons: "Create a new batch" (unselected) and "Create a new document" (selected).

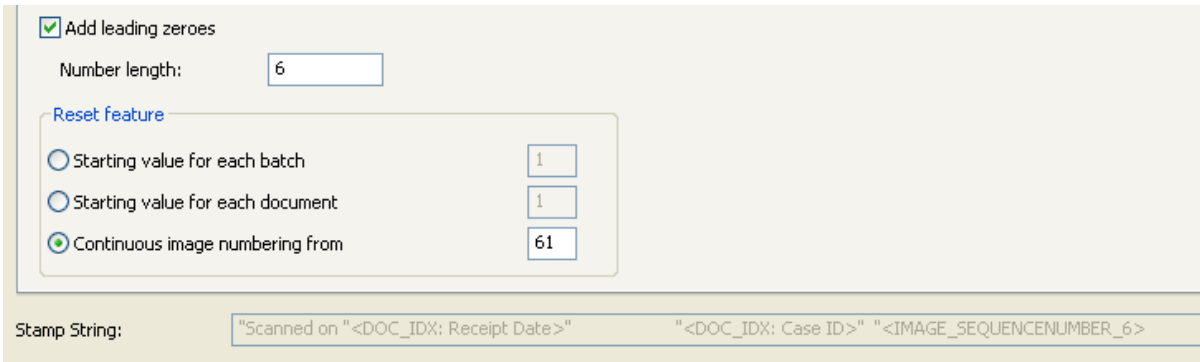
- **Search for value in zone** allows batch and document separation to be performed based on a specific OCR read value. For instance, if the lead page of every document is a titled form, Capture Pro Software can now look for that title (e.g., "HCFA") in a specific location on each image and perform a document separation when it finds a match.
- **Note:** The new option **Character set rule** was not fully implemented and therefore is not applicable in Version 2.5

Enhanced Digital Stamping and Bates Numbering

- Prior to Version 2.5, image stamping was limited to a sequential number within each document.
- Enhanced Digital Stamping now allows users to build a custom string that may contain one or more metadata fields, including job, batch and document information.



- This is perfect for Bates Numbering applications which often require prefixes, suffixes, and zero-filled sequential counters.



Enhanced Digital Stamping example

ILLNESS

Full-time employees are eligible for five (5) sick days per year.

Employees missing work due to illness must call their supervisor relating the type of sickness, expected return date and work to be covered during the absence. Failure to call your supervisor each day you are out sick may result in disciplinary action and disqualify you from paid sick leave you might otherwise be eligible to receive.

The Company reserves the right to require an employee to submit medical documentation of the need for an absence, and to require employees who are absent consecutive days to submit a physician's certification that the employee is fit to resume employment duties. Sick days are not carried over to the next year, and the Company does not pay for unused sick days at the end of the year, at the time of termination or under any other circumstances.

Scanned on 2010-02-23 Jones vs Smith 000107

may be extended, in the Company's sole discretion and on such terms as the Company may impose, taking into consideration the reason for an extension and staffing needs. Employees granted a leave extension will be returned to work at the end of the extension period if their position is open at that time.

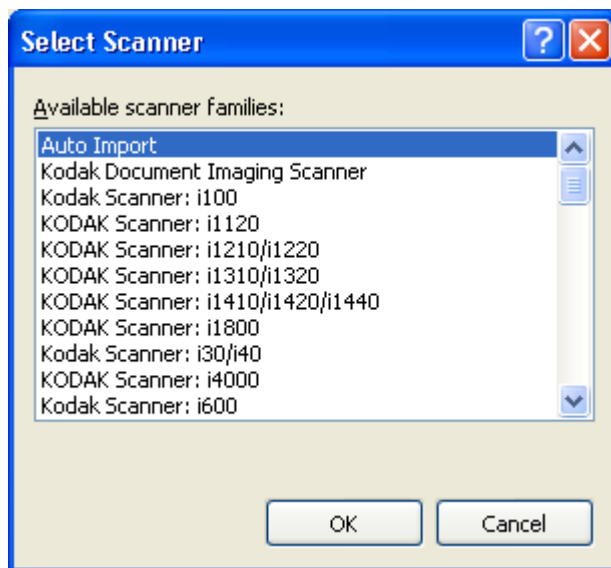
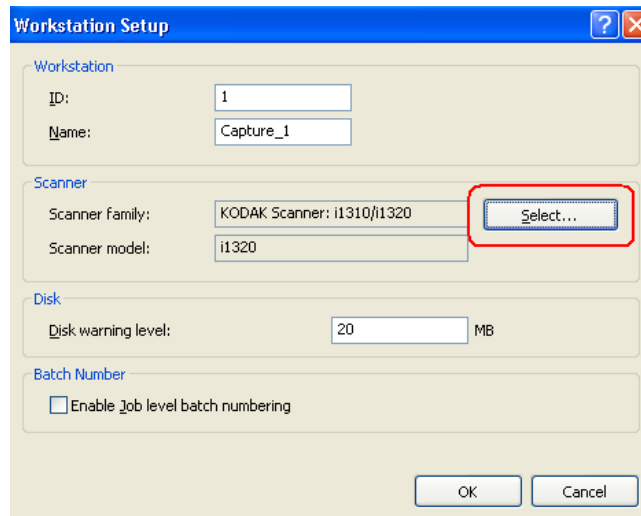
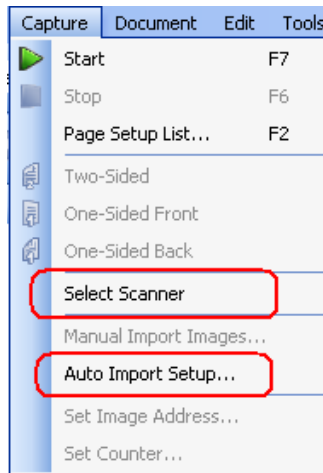
Any employee who fails to return to work at the end of the leave, or is employed by another company or working elsewhere during the leave, will be considered to have voluntarily terminated their employment with the Company.

Scanned on 2010-02-23 Jones vs Smith 000108

Auto Import – New Options and Features

Enabling Auto Import

- For scanner licenses, Auto Import continues to only be available for Group E-G of Capture Pro Software.
- Auto Import is also now available in a **new** separate product offering called the **Auto Import Edition**. In the Auto Import Edition, scanning is not available.
- Auto Import is still configured (**Auto Import Setup...**) from the **Capture** menu. However, to enable Auto Import in Version 2.5, you must select “Auto Import” from the **Select Scanner** dialog:



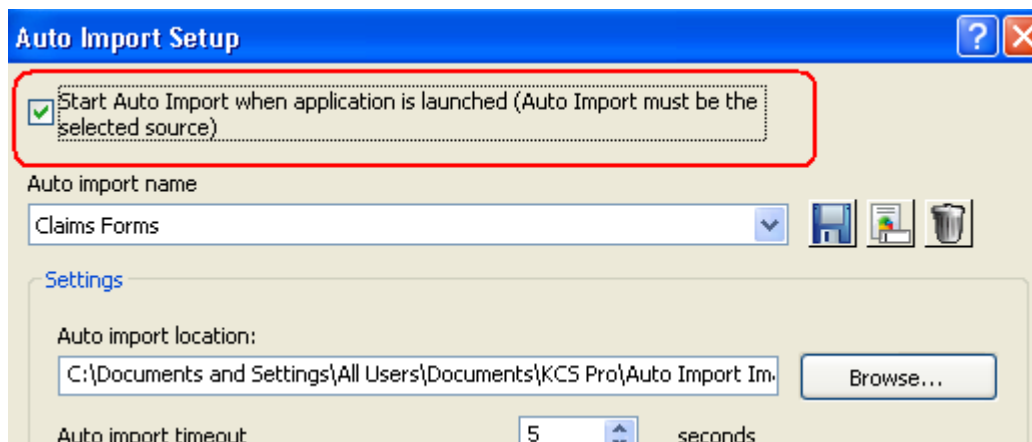
- Once **Auto Import** has been selected as the “scanner”, it will remain enabled, even between restarts of Capture Pro, until you change the selected scanner.

Auto Import Edition – NEW Product Offering

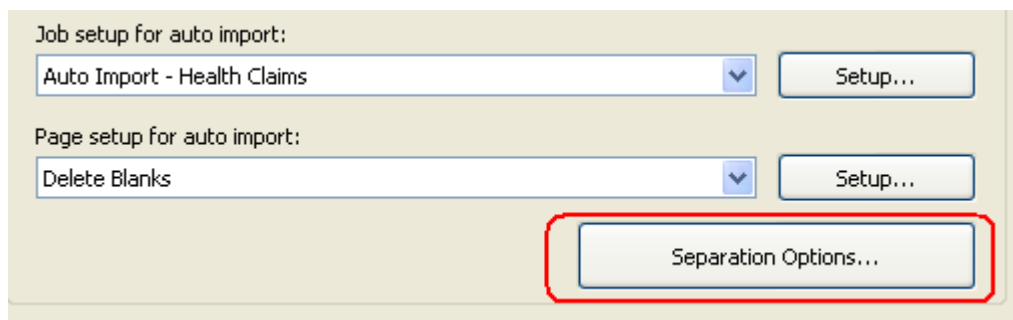
- There is now a separate product offering called the **KODAK Capture Pro Software – Auto Import Edition**:
 - All the features and functions of Capture Pro Software Group A-F licenses are available with one exception: **scanning/rescanning with an attached scanner is not supported**
 - Upon installation of the Auto Import Edition, **Auto Import** is automatically selected as the “scanner” (see previous section) and therefore Auto Import is automatically enabled.
 - When launching the Capture Pro Software Auto Import Edition for the first time after install, the user is automatically taken into **Auto Import Setup** for configuring Auto Import.

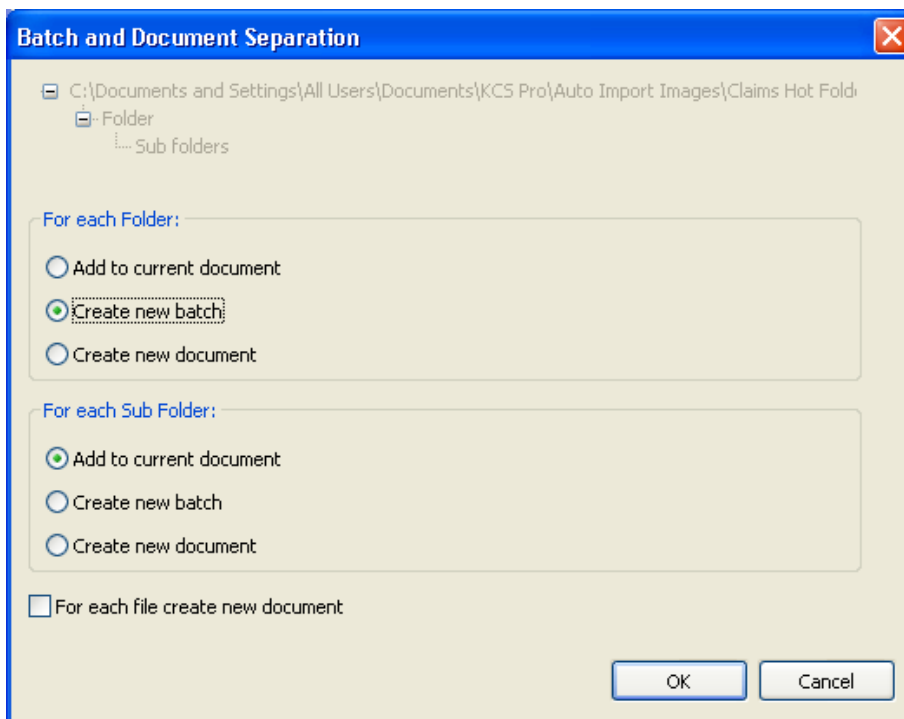
New Setup Options for Auto Import

- The polling of Hot Folders (or Watch Folders) can now be automatically started upon start up of Capture Pro. When enabled, the Batch Manager screen will be bypassed upon startup. When disabled, you must press the **Green Start** button on the main screen to begin the Auto Import process

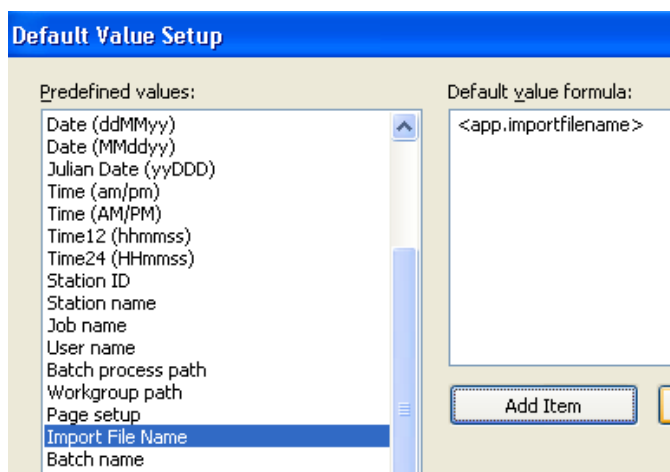


- There are new separation options for Auto Import and all separation options are now configurable in a separate dialog



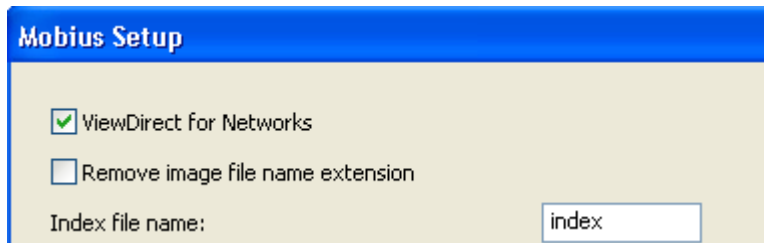


- In the previous version of Capture Pro, the only separation option was the ability to create a New Batch for each folder of images that were auto imported. It is now possible to perform Document or Batch Separation for each auto import folder.
- In addition, you can also perform Document or Batch separation for each **sub-folder** that may exist in the folders that are being imported.
- Finally, you also have the option to create a new document for each **file** that is imported. So for instance, if you have a folder of multi-page TIFF or multi-page PDF files, you can configure Auto Import to a document separation for each file imported.
- When the option **For each file create new document** is enabled, the name of the file that is being imported is now available to be saved as index data for the new document that is created. To do this, you must choose the appropriate pre-defined value as the **Default Value** for the index field:



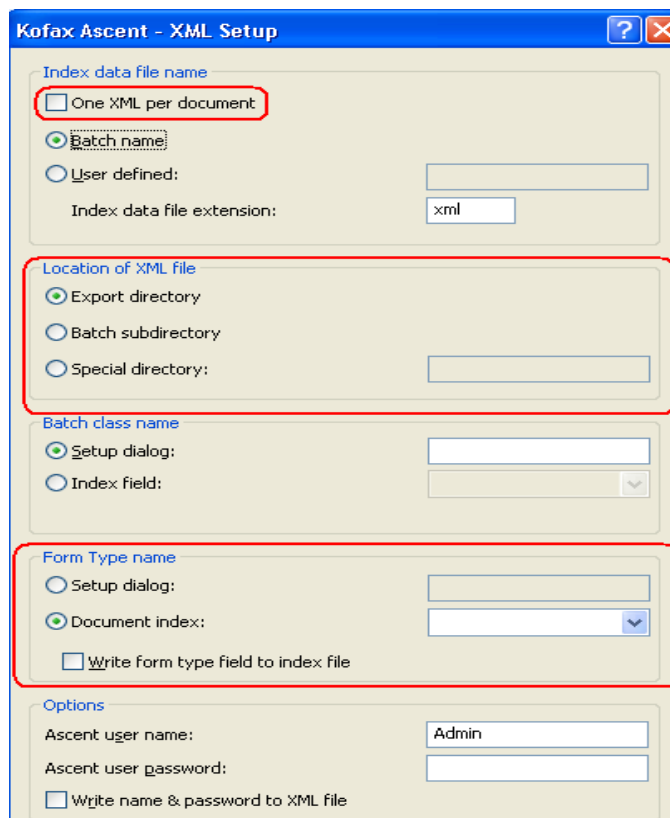
System Output Additions

- The **SharePoint** system output destination has been updated to work with **SharePoint 2010** as well as SharePoint Server 2007
- The **Mobius** system output destination has been updated to also work with the PC-based repository system called **ViewDirect for Networks**. When this new option is disabled, the Mobius system output will output to the mainframe repository called **ViewDirect for MVS**.



The Mobius Setup dialog box has a blue title bar with the text "Mobius Setup". Below the title bar, there are two checkboxes: "ViewDirect for Networks" which is checked, and "Remove image file name extension" which is unchecked. At the bottom, there is a label "Index file name:" followed by a text box containing the word "index".

- The **Kofax Ascent** (i.e., Kofax Capture) system output destination has been updated with new features and capabilities to make it easier to automate the importing of images and index data into Kofax Capture from Capture Pro Software. The new system output destination is called **Kofax Ascent – XML** and includes the following new features:
 - Ability to output one XML file per document
 - Support for Kofax Capture Form Types
 - Ability to specify the location where the XML index files are output. This allows a single Kofax Capture Auto Import Server to process images and index data from all configured Jobs in Capture Pro Software.



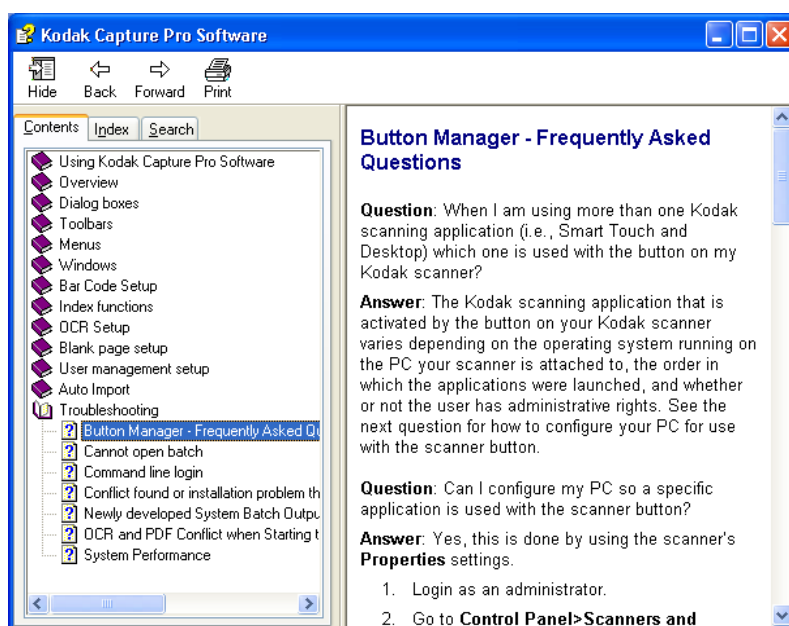
The Kofax Ascent - XML Setup dialog box has a blue title bar with the text "Kofax Ascent - XML Setup". It contains several sections with red rectangular highlights around specific options:

- Index data file name:** A red box highlights the "One XML per document" checkbox, which is currently unchecked. Below it, the "Batch name" radio button is selected.
- Location of XML File:** A red box highlights the "Export directory" radio button, which is selected. Below it, the "Batch subdirectory" and "Special directory:" options are visible.
- Batch class name:** The "Setup dialog:" radio button is selected.
- Form Type name:** A red box highlights the "Document index:" radio button, which is selected. Below it, the "Write form type field to index file" checkbox is unchecked.
- Options:** The "Ascent user name:" text box contains the word "Admin". The "Write name & password to XML file" checkbox is unchecked.

Fixes in Version 2.5.0:

General Operation

- Performance of **post-scanning operations** on very large batches has been improved in Version 2.5. Specifically, the time to perform the following operations have all been improved:
 - Opening a batch
 - First Rescan after opening a batch
 - First Deletion after opening a batch
 - First Rotate after opening a batch
 - Split document
- In a multi-user environment, where Job settings and Page Setups are shared in a local area network environment, it was possible to have **duplicate batch names** for the same Job being run on more than one workstation. This problem has been fixed in Version 2.5.
- Enabling the Page Setup options **Merge, Split, and Overcrop** when performing Color scanning was resulting in very large images being stored into Capture Pro batches. This problem has been fixed by ensuring that color images are recompressed to their original scanned JPEG Quality setting.
- When the **Batch Explorer window** has the focus and is the active window, the focus will be lost when navigating through the batch and crossing a document boundary. This problem has been fixed in Version 2.5.
- When creating a new batch, the suggested new batch name will now be highlighted in the **New Batch dialog**. This allows the user to overwrite the suggested batch name without having to Tab or mouse-click to the batch name entry box.
- The **Remove Blank Images** window is now maximized to fill up the entire screen when in operation. This results in more images per screen and a larger image display when reviewing images to be deleted.
- In Version 2.5, there is a new **Help topic** explaining how to configure the Kodak scanner buttons (e.g., i1200, i1300, i4000) for use with both Smart Touch and Capture Pro Software. Please refer to this Help topic if pressing the scanner button doesn't perform as expected.



Translations and User Interface

- When the user language is **Portuguese**, the Scanner settings dialog (accessible from Page Setup) were being displayed in English. This has been fixed in Version 2.5.

Job Setup.

- In Version 2.0.1, the **Reset Document ID** option in Job Setup no longer worked. This has been fixed in Version 2.5.

Indexing

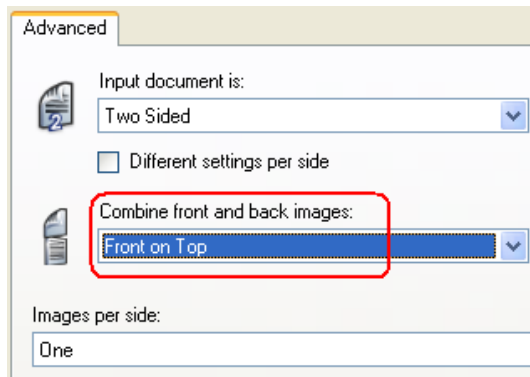
- Bar code misreads of poor quality **Code 128 bar codes** have been fixed in Version 2.5. To activate the bar code reading improvements, you must set the **Quality** setting in the bar code zone properties to the left-most or **Worst** setting.



- When the default value for a **Batch index field** was set to **Last Value**, the last value was not being carried over to new batches when they were manually created from either the Batch Menu or the New Batch button. This problem has been fixed in Version 2.5.
- **Drag n' Drop OCR indexing** could still be performed by users that didn't have the User Profile privilege to modify or enter index data. This problem has been fixed in Version 2.5.
- **Database Lookup** (via ODBC) support has been extended to **Sybase** databases in Version 2.5.
- When performing a manual **Split Document** operation, Capture Pro Software Version 2.5 will now perform bar code and zonal OCR indexing on the lead page of the new document that was created from the split operation.
- Pressing the **Next Invalid** key while in Indexing mode may not always place the cursor on the correct index field when the next invalid field is in a subsequent document in the batch. This problem has been fixed in Version 2.5.
- The GUI layout of the **Index window** while in Indexing mode for a Job was not always maintained when exiting and re-entering Indexing mode. This was especially true when the Index window was positioned either above or below the Image Viewer. This problem has been fixed in Version 2.5.

Scanning and Page Setup

- The ability for Kodak scanners to **combine the front and back images** into a single image is now supported in Capture Pro Software Version 2.5:



- **Color scanning at 300 DPI uncompressed** would intermittently cause Capture Pro Software to hang up or crash. This problem has been fixed in Version 2.5.

Output

- Output TIFF images from Capture Pro Software were not compatible with **EMC Captiva Formware**. This problem has been fixed in Version 2.5.
- PDF output (both image-only and Searchable PDF) is now consistent in how the PDF images are bookmarked. In Version 2.5, **no bookmarks** are created at all when outputting PDF or Searchable PDF images.
- When **Long Paper image stitching errors** occurred (due to invalid image width or length), Capture Pro Software did not indicate which document and image numbers caused the stitching error. This has been corrected in Version 2.5.
- The **File360 system output** destination was failing on batches containing 1000 or more documents. This problem has been fixed in Version 2.5.
- In Version 2.0 of Capture Pro Software, **Searchable PDF/A** output was not fully compliant with the PDF/A specification. Regular image-only PDF files did not have this problem and Version 1.1.2 of Capture Pro also did not have the problem. It has been fixed in Version 2.5.
- Outputting **Multi-Page TIFF files to a network location** could be very slow compared to Single-Page TIFF output to the same location. This problem has been corrected in Version 2.5.