

Alaris IN2 Ecosystem



INTELLIGENT JOB SELECT

Alaris Capture Pro Software Version 5.5.1
Release Notes

Overview

Upgrading to Version 5.5.1

Additional Scanner and Operating Systems Support

New Features, Enhancements, Improvements

- Support for S2000 Series Scanners
 - Button support
 - Multi-user/Multi-PC support and User PIN for S2060w and S2080w
- Intelligent Job Select for all Kodak and Alaris Scanners
 - Link to web page for creating and printing patch sheets
 - Configuration options for changing or keeping scanner settings
- Other Features and Enhancements
 - Alaris re-branding
 - PDF/A-3 support
 - ICC Profiles with JPEG output

Problems Fixed in 5.5.1

Problems Fixed in 5.5.0

Upgrading to Version 5.5.1 (1)

Upgrading Stand-Alone Installations

- The customer's **Capture Pro Software Serial Number** must be entitled to the 5.5 release
 - **The Entitlement Date (or Software Assurance Expiration Date) must be September 1, 2017 or later**
- To upgrade, download the installer (**CapProSW_5_5_1.exe**) file from www.kodakalaris.com/go/captureprodownload and run it.
 - **The installer will automatically upgrade an existing Capture Pro install to Version 5.5.1**
 - **An Internet connection is required during the upgrade as the Alaris licensing system will generate a new 5.5 license**
 - **EXCEPTION: An existing 5.5.0 customer can upgrade to 5.5.1 without having an Internet connection as their existing 5.5 license will also work with Version 5.5.1.**

Upgrading to Version 5.5.1 (2)

Upgrading Network Edition Installations

- Both the NE Server and the NE Client workstations must be upgraded to Version 5.5 at the same time.
 - You cannot run a Version 5.4 client workstation with a Version 5.5 NE Server
 - You cannot run a Version 5.5 client workstation with a Version 5.4 NE Server
 - An existing 5.5.0 Network Edition customer can upgrade their client workstations to Version 5.5.1 without having to upgrade the Network Edition Server to 5.5.1
- To upgrade, download the installer files from www.kodakalaris.com/go/capturepronedownload and run them
 - IIS on the Network Edition Server must be STOPPED prior to the upgrade and RESTARTED after the upgrade

Additional Scanner and Operating System Support

Scanner Support Additions

Alaris S2050	Group A
Alaris S2060w	Group A
Alaris S2070	Group A
Alaris S2080w	Group B

Complete list of supported scanners
can be found at:

www.kodakalaris.com/go/kcsscannersupport

Epson DS-530	Group A
---------------------	----------------

HP ScanJet N6010	Group A
-------------------------	----------------

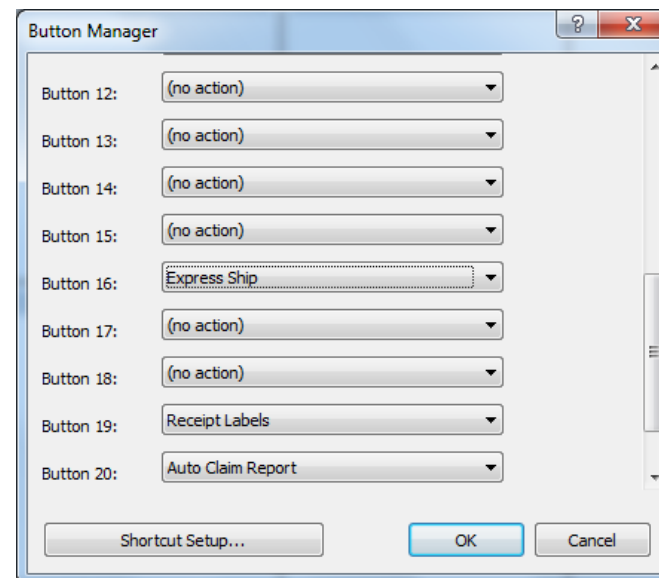
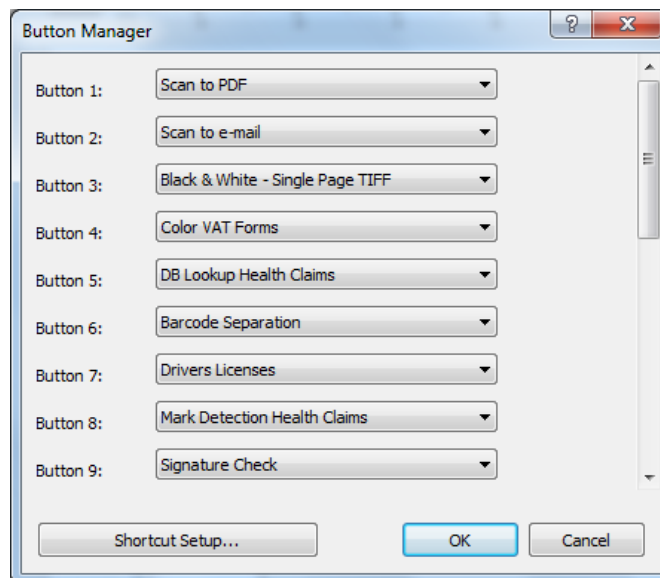
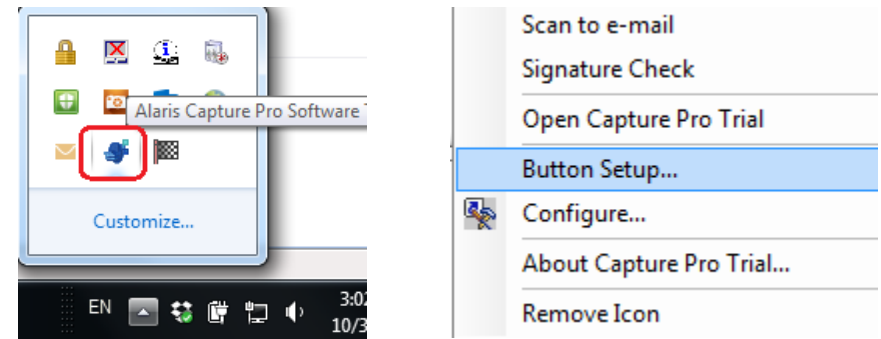
Additional OS Support

Windows Server 2016 is now supported for the Network Edition Server and Auto Import installations

New Features and Enhancements (1)

S2000 Series Button Support

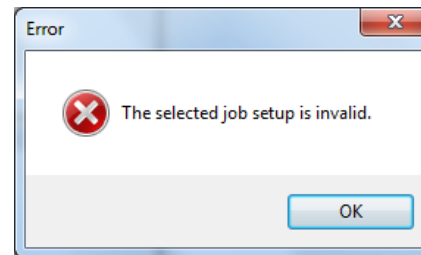
- **Up to 20 Button Assignments** can now be configured in Capture Pro Job Setup



New Features and Enhancements (2)

S2000 Series Button Support (continued)

- For stand-alone installations, button assignments are at the PC/system level
- If a user, based on their User Profile, **does not have access to a Job for which a button has been configured**, they will get the following message when pressing the associated scanner button:

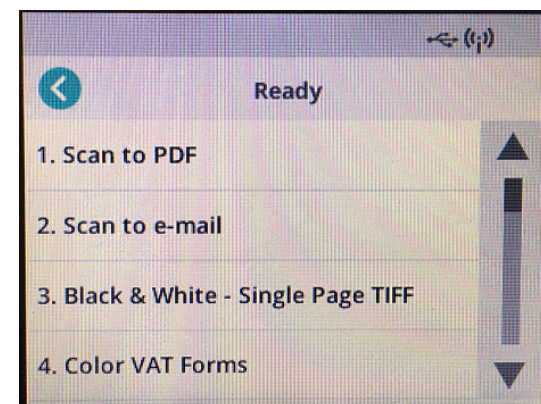
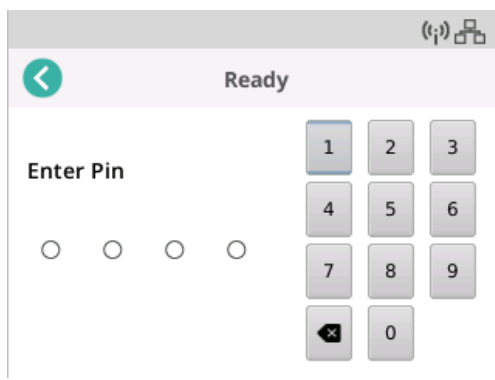
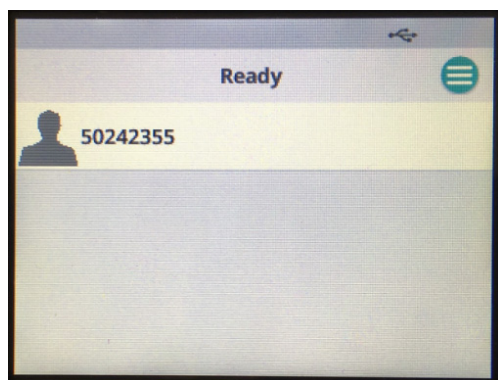
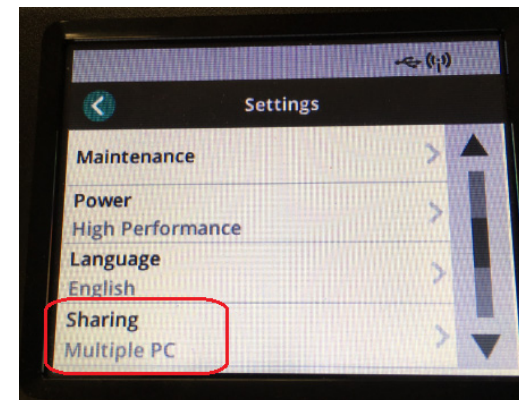


- For Network Edition installations, all client PCs attached to the same scanner model will get the same button assignments
- Capture Pro must already be running in order for button press to work from the S2000 Scanner OCP
 - Launching Capture Pro Software from a button press is currently not possible

New Features and Enhancements (3)

Multi-PC Support for S2060w and S2080w Scanners

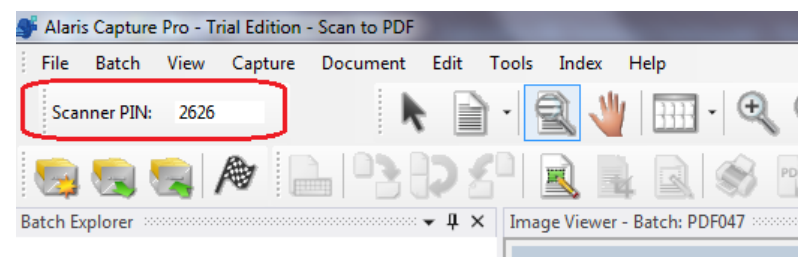
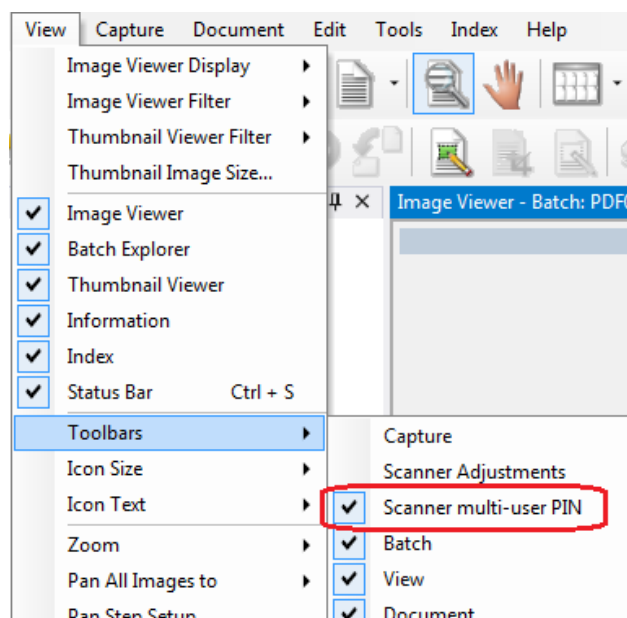
- When configured for **Multiple PC** sharing, up to 10 PCs can connect to an S2000w scanner at any one time
 - The users' Windows login user name is displayed on the Scanner OCP
 - An optional **Scanner Pin** can be enabled from the Main Screen requiring the user to enter their Pin when they initiate scanning from the Scanner OCP



New Features and Enhancements (4)

Multi-PC Support for S2060w and S2080w Scanners (continued)

- Configuring the Scanner Multi-User PIN is done from a new Toolbar (currently only Users that are members of the default **SysAdminGroup** have access to the new toolbar)

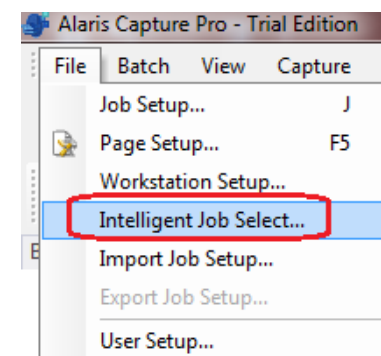


- The Scanner PIN is specific to each PC and therefore is not saved at the User Profile level and is not propagated in a Network Edition installation


New Features and Enhancements (5)

Intelligent Job Select for all Kodak and Alaris Scanners

- Provides the ability for Capture Pro to automatically switch Job Setups or Page Setups on-the-fly during scanning without any operator intervention
- Enabled from **File Menu** option from the main screen



Configuration Steps

- 1) **Select the Patch Type (10-15)** – only one patch type can be used per workstation
- 2) **Scan a sample page**  and name the file
- 3) **Draw a bar code or OCR zone** where the Page Setup/Job Setup information will be placed on the Patch sheets – only one zone can be defined
- 4) **Configure the bar code/OCR zone** as necessary (see next slide)
- 5) **Define the rules for switching Job Setups and Page Setups** when a Patch is detected (see slide after next)



New Features and Enhancements (6)

Intelligent Job Select for all Kodak and Alaris Scanners (continued)

- Configuring the bar code/OCR zone

The 'Bar Code Zone Setup' dialog box is shown. It has a title bar with a question mark and a close button. The 'Zone name' field contains 'QR Code'. The 'Side' is set to 'Front'. The 'Read value' field contains 'VAT Forms'. The 'Orientation' is set to 'Horizontal'. The 'Confidence' is set to '0'. The 'Quality' is set to 'Worst'. The 'Position' is set to 'Anywhere'. The 'Type' list includes EAN 13, EAN 8, UPC-A, UPC-E, UCC Code 128, Code 39 (no start stop), Code 39 Ext, Planet (US Post Office code), PostNet, Intelligent Mail Barcode, PDF417, Data Matrix, and QR Code (selected). The 'Verify checksum' checkbox is unchecked. The 'Minimum partial read characters' is set to '6'. The 'Filtering' is set to 'No filtering'. The 'Process bar code by' is set to 'Auto'. The 'OK' and 'Cancel' buttons are at the bottom right.

The 'OCR Zone Setup' dialog box is shown. It has a title bar with a question mark and a close button. The 'Zone name' field contains 'Patch OCR Zone'. The 'Read value' field contains '12345678'. The 'Side' is set to 'Front'. The 'OCR' section has a 'Character set rule' field, a 'Primary Language' set to 'English', and a 'Secondary Language' list with Afrikaans, Albanian, Aymara, Basque, Bemba, and Blackfoot. The 'Custom Dictionary' field is empty. The 'Browse' button is next to it. The 'OK' and 'Cancel' buttons are at the bottom right.

Notes:

- Only 1 zone can be defined (either bar code or OCR)
- Zone setup is similar to regular bar code and OCR zone setup but with less options (e.g., separation settings are not present)
- Capture Pro barcode reading is always done

New Features and Enhancements (7)

Intelligent Job Select for all Kodak and Alaris Scanners (continued)

- Defining the Rules for switching Job Setups and Page Setups

The screenshot shows the 'Intelligent Job Select' dialog box with the 'Setup' tab selected. It contains a table with columns 'Zone Result', 'Type', and 'Change to Setup'. The 'VAT Forms' row is highlighted. Below the table, there are fields for 'If detect' and 'change' (set to 'Job Setup'), and buttons for 'Add' and 'Delete'. At the bottom, there is a section 'When changing jobs' with two radio buttons: 'Always change to page setup in job (slower)' (selected) and 'Use one page setup for all jobs (faster):'. A red arrow points from the text 'other than an i5x50' in the notes to the 'Use one page setup for all jobs (faster):' option. Below this section is a dropdown menu showing 'Black & White - 200 DPI - Keep All'. At the bottom of the dialog are 'OK', 'Cancel', and 'Apply' buttons.

Zone Result	Type	Change to Setup
Mark Detection	Job Setup	Mark Detection - Health Claims
VAT Forms	Job Setup	Color VAT Forms

If detect

change to

When changing jobs

☒ Always change to page setup in job (slower)

☐ Use one page setup for all jobs (faster):

Notes:

- Enter **Value** (from bar code or OCR read results) and **Setup Name pairs** for each Job Setup and Page Setup that will be used
- Each Patch sheet created must have the bar code or OCR text data in the same location as defined by the zone that was created
- There is no limit to the number of Intelligent Job Select rules that can be defined
- When using patch sheets to switch Jobs and PC is connected to a scanner other than an i5x50, the following options are available:
 - Always change scanner settings to default Page Setup for the Job
 - Always use the specific Page Setup and do not change scanner settings

New Features and Enhancements (8)

Intelligent Job Select for all Kodak and Alaris Scanners (continued)

So what happens during scanning?

1. Scanner is either started in **Page on Demand mode** (slower) or in **Normal mode** (faster) depending on whether Page Setups will be changed when switching Jobs
2. Capture Pro detects configured Patch Type and reads the bar code/OCR data on the Patch sheet and if a **Value and Setup Name pair** match is found:
 - Change the scanner settings based on the new Page Setup and continue scanning in Page on Demand mode **OR**
 - Close the current batch, create a new batch in the new Job Setup, and continue scanning either in Page on Demand mode (using the default Page Setup for the new Job) or continue scanning at scanner rated speed using the Page Setup select in Intelligent Job Select setup
3. Patch images are deleted by Capture Pro and are not displayed or stored as part of the batch
4. If a Value and Setup Name pair match is NOT found then the Patch page images are stored in the batch, the scanner is stopped, and an error message is displayed

New Features and Enhancements (9)

Intelligent Job Select for all Kodak and Alaris Scanners (continued)

Usage Notes:

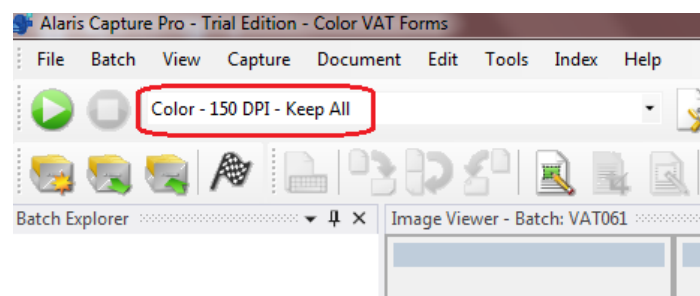
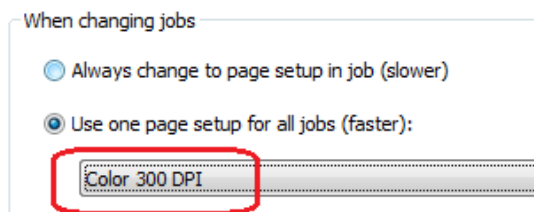
- If a Page Setup rule is defined, then scanning will be done in Page on Demand mode

Zone Result	Type	Change to Setup
Mark Detection	Job Setup	Mark Detection - Health Claims
VAT Forms	Job Setup	Color VAT Forms
300 Color	Page Setup	Color 300 DPI

When changing jobs

- ☒ Always change to page setup in job (slower)
- ☐ Use one page setup for all jobs (faster):

- If scanning is done using a Page Setup other than the one selected in Intelligent Job Select, then scanning will be done in Page on Demand mode

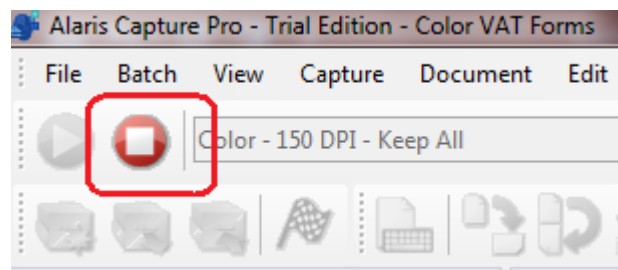
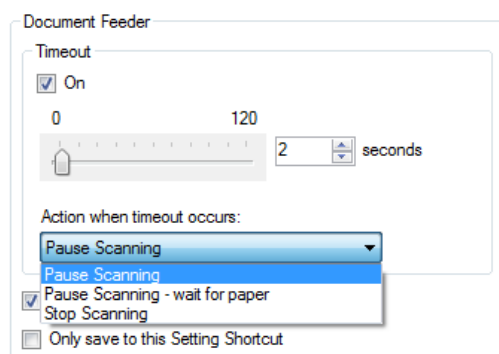


New Features and Enhancements (10)

Intelligent Job Select for all Kodak and Alaris Scanners (continued)

Usage Notes (continued):

- **Scanner Timeout Action of “Pause”** should not be enabled when Intelligent Job Select is enabled – may cause Capture Pro to hang when attempting to Stop the Scanner (F6)



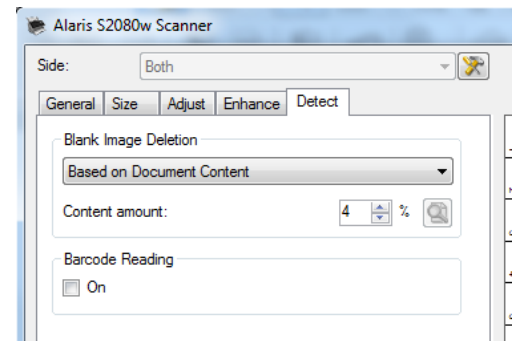
- When Intelligent Job Select is enabled causing Page on Demand scanning, **scanning with the Flatbed (or Automatic)** may also cause Capture Pro to hang
- User must manually Stop Scanning (F6 button) after **performing a Rescan** when Intelligent Job Select is enabled causing Page on Demand scanning– otherwise the scanner will stay enabled preventing further user action (e.g., Output Batch, Close Batch, etc...)

New Features and Enhancements (11)

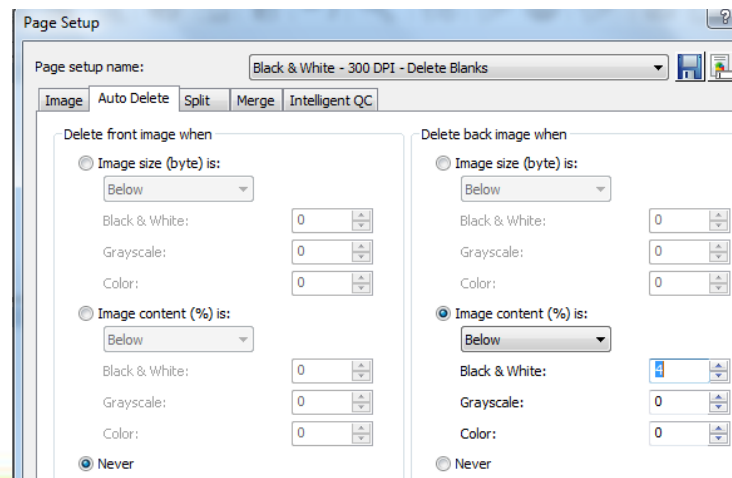
Intelligent Job Select for all Kodak and Alaris Scanners (continued)

Usage Notes (continued):

- When Intelligent Job Select is enabled causing Page on Demand scanning, **Blank Page Detection in the scanner will not work**



- Instead, configure **Auto Blank Page Deletion in Capture Pro Page Setup**

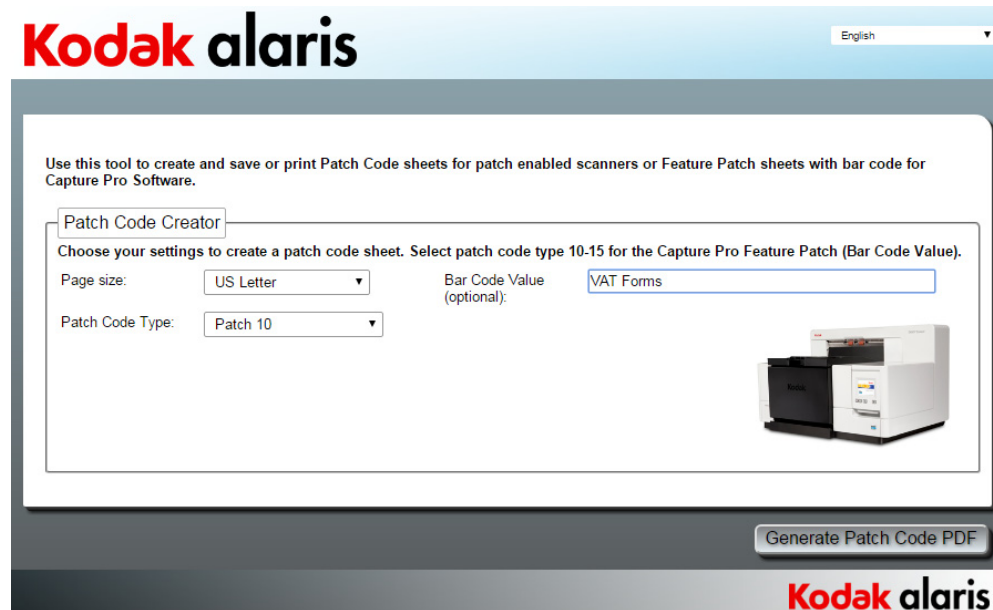


New Features and Enhancements (12)

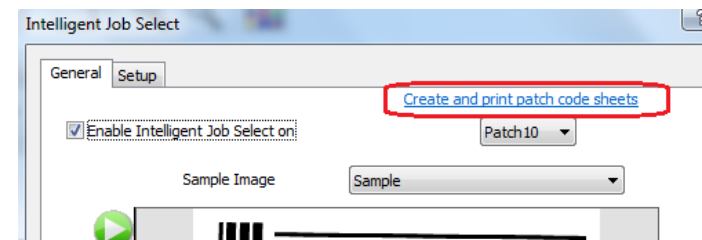
Intelligent Job Select for Kodak and Alaris Scanners (continued)

- **How Can I Create Patch Sheets?**
 - A website is available allowing customers to create their own Feature Patch sheets

<https://PatchCode.KodakAlaris.com>



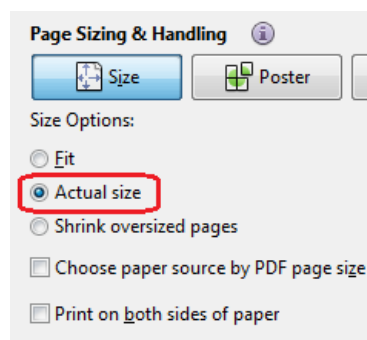
- Link is available in Intelligent Job Select setup



New Features and Enhancements (13)

Intelligent Job Select for Kodak and Alaris Scanners (continued)

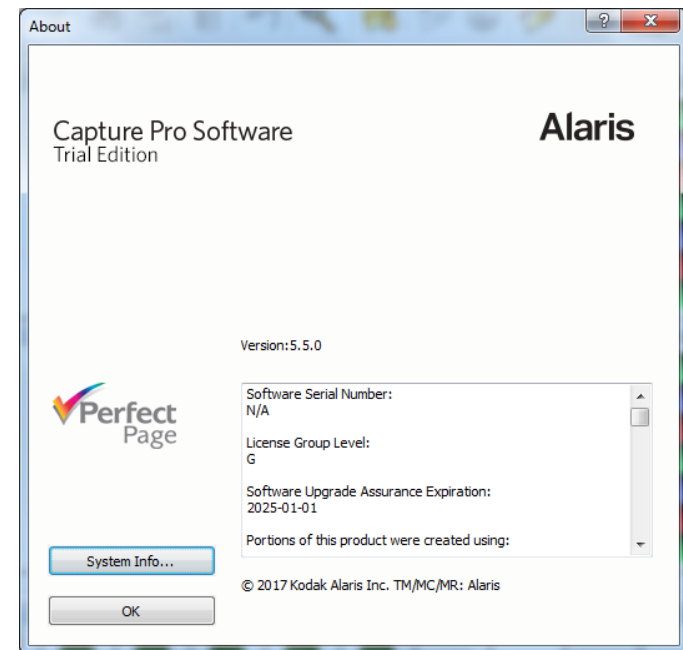
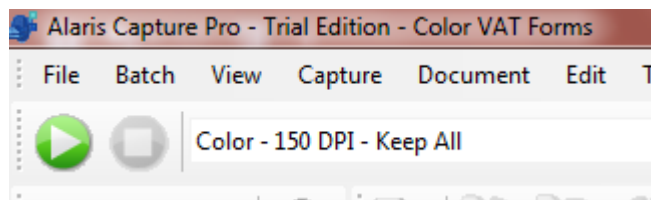
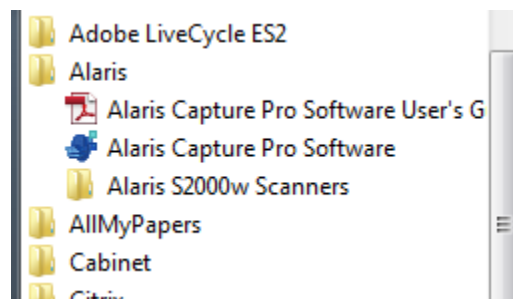
- **How Can I Create Patch Sheets?**
 - A QR barcode will be generated that can contain the Job Setup/Page Setup information used by Capture Pro to automatically switch Job Setups or Page Setups without operator intervention
 - Feature Patch sheets must be printed in “Actual Size” to ensure that the scanner will recognize the patch code and that Capture Pro will recognize the QR code



New Features and Enhancements (14)

Alaris Re-Branding

- **Installer, Splash Screen, About Dialog, Program Groups etc...**
 - Product name is now Alaris Capture Pro Software



Adobe Flash Player 27 NPAPI	Adobe Systems Incorporated	9/12/2017	6.17 MB	27.0.0.130
Adobe Reader X (10.1.13)	Adobe Systems Incorporated	1/22/2015	235 MB	10.1.13
Alaris Capture Pro Software 5.5.0	Kodak Alaris Inc.	10/4/2017		5.5.0
Alaris S2000 Scanners	Kodak Alaris Inc.	8/24/2017		1.3
Alaris S2000w Scanners	Kodak Alaris Inc.	9/14/2017		1.4

New Features and Enhancements (15)

Continuous PDF Output Enhancements

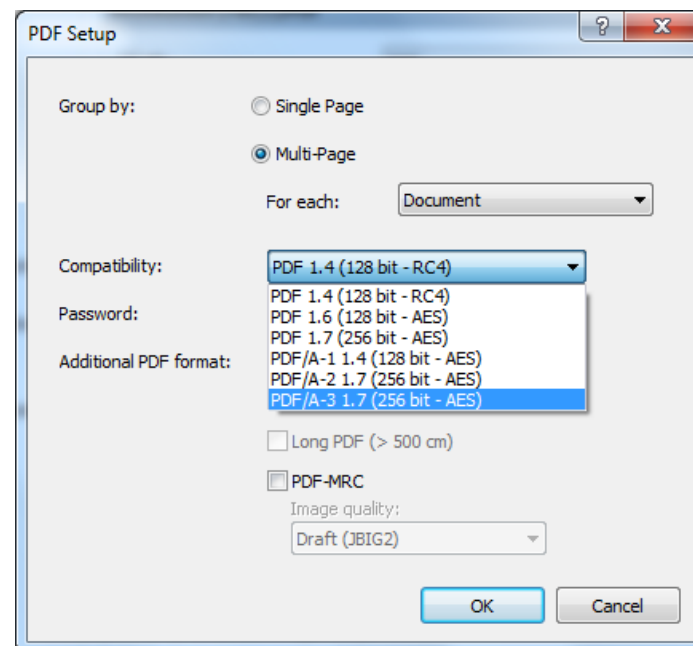
- PDF/A-3 support has been added
- PDF/A compliance with **Nuance Power PDF**
 - Capture Pro PDF/A compliance testing is done with Adobe Preflight
 - With Nuance Power PDF, PDF/A output does not pass all compliance tests
 - The following **ENV.INFO*** setting will result in multi-page PDF/A output compliance with Nuance Power PDF:

[UserOptions]

GenerateMultipagePDFByEngine = TRUE

- Nuance engine, instead of PDFMeld, is used to create multi-page PDF output
 - PDF output processing will be a bit slower

** ENV.INFO file is located in C:\Program Files (x86)\KODAK Alaris\Capture Pro\System directory*



Problems Fixed in 5.5.1

Indexing and Barcode Reading

- **User can no longer use the keyboard (i.e., TAB key) to access a drop-down list in Indexing Mode**
 - New problem in 5.5.0 that has been fixed in 5.5.1
- **User cannot use the mouse to access the drop-down list when Allow Any Value is enabled**
 - New problem in 5.5.0 that has been fixed in 5.5.1
- **Customer's Large QR Barcode is not reading in Capture Pro**
- **Auto barcode zone setting (i.e., Intelligent Barcode Reading) could actually slow scanning down as all barcode types are being enabled in the scanner**

Problems Fixed in 5.5.1 (continued)

Scanning and Main Screen GUI

- **T-Patch Images are no longer being discarded** when Image Addressing and Patch Code reading is configured for the i1800 or i5850 Scanners
- **Capture Pro can crash when dual-stream scanning with “OFEPageTimeout” option enabled**
 - OFEPageTimeout is an ENV.INFO file option that resolves the problem of the last page scanned not displaying until the scanner times out or is disabled
- **Only members of the SysAdminGrp can change the S2000 Scanner PIN**
 - Any user can now change their own Scanner PIN
- **Scanner error reported in Capture Pro when stopping scanner from Scanner operator control panel when no paper is scanned**
 - Message displayed to user has been updated to indicate that no paper was scanned
- **Capture Pro could crash if Rescan is the very first thing done after launching the software**

Problems Fixed in 5.5.1 (continued)

Scanning and Main Screen GUI (continued)

- **Scanning very small documents with Intelligent Job Select enabled could cause Capture Pro main program to crash**
 - Licenses and Business Card size documents could cause the crash
- **“Server Busy” messages occurring when launching Capture Pro after upgrading to Version 5.5.0**
 - Problem can occur with PCs physically or network-connected to an MFP device
- **Scanner Counter printing sequence can be disrupted when rescanning while scanner is still enabled**
 - Problem fix is to prevent users from rescanning while scanner is enabled
 - The following optional entry must be added to the **ENV.INFO** file:

```
[UserOptions]  
DisableRescanWhileScanning = 1
```

Problems Fixed in 5.5.1 (continued)

Auto Import

- **Auto Import as a Service is not working** when Auto Import is running as a Network Edition client
 - Only the Capture Pro client workstation software needs to be upgraded to 5.5.1 to resolve this problem
- **Fill-in PDF forms are imported into Capture Pro without the fill-in data and no error is displayed or logged**
 - Nuance is the Default PDF import engine and in Version 5.5.1 an error message will now be displayed and logged when Fill-In PDF forms are attempted to be imported
 - An alternative PDF import engine, that will successfully import PDF fill-in forms, can be enabled by adding the following entry to the **ENV.INFO** file:

```
[UserOptions]  
UseXFiniumEngine = TRUE
```


Problems Fixed in 5.5.1 (continued)

Job Setup and Output

- **Capture Pro holding Oracle ODBC connection open after index data transfer has completed during output**
 - Users on PC could not access the Oracle database unless Capture Pro was shut down
- **sFTP/FTP site passwords of longer than 15 characters are causing Capture Pro to crash**
- **New Feature for sFTP/FTP Output: Allow the ZIP file name to be configurable based on batch level index field data**
- **Capture Pro does not support TLS 1.2 for SharePoint (On-Premise and Online) Authentication**
- **Customer getting Maximum Message Size Quota error when connecting to Documentum Repository**

Problems Fixed in 5.5.1 (continued)

Job Setup and Output (continued)

- **Remove “Hold for Indexing” option in Info Input Express Setup Wizard**
 - The HOLD function is no longer available in Info Input Express Version 2.2 and 2.3
 - In Version 5.5.1, there is no longer an option to "Hold for Indexing" or "Submit to Output" in the Info Input Express Setup Wizard
 - All documents output from Capture Pro will get delivered to the associated Info Input Express Activity for processing
 - If the Activity is configured for Indexing then the document will go into the Indexing queue for the Activity
 - If not, then the document will go straight to the output step as configured in the Activity Setup
- **When selected scanner is not connected or powered on, it takes twice as long to get into Job Setup**

Problems Fixed in 5.5.0

- **Output processing time** for regular (i.e., non-searchable) PDF output has increased significantly after upgrading to Version 5.4
 - Output that does not include configurable PDF Properties (Subject, Title, Keywords, etc...) will now get processed faster
- **Rotate Based on Bar Code** option combined with "Auto" bar code zone setting, may result in incorrectly rotated images
- **Pages to Read settings for OMR zones does not work** - OMR zones were using the bar code setting
- **ICC Profile information** (when scanner enabled to provide ICC profile) missing on output JPEG files
- **UNC multi-user path** is no longer working with Version 5.4
- **Job Setup: Sorting by Patch Configuration GUI for i5x50S scanners is missing Sheets After the Patch to Sort option**

Problems Fixed in 5.5.0 (continued)

- Alfresco SOD is not working with **Version 5.x of Alfresco**
- **Scan settings changes to Simplex** even though Duplex Scanning is configured - Paperstream with fi-7160 and other Fujitsu scanners
- **DB Lookup from any ODBC database starts working and then will fail** after upgrading to Version 5.4 – must restart Capture Pro to get DB Lookup working again
- **Scanner Print Counter can get reset back to 1** incorrectly using a specific user scenario
- **Scanner Settings dialog** (ie., TWAIN GUI accessed from Page Setup) is no longer displaying in the GUI Language for the Capture Pro user
- **FTP Output reports as being successful when it is not** - Batch Name contains Unicode characters

Problems Fixed in 5.5.0 (continued)

- **DB Lookup is not working with Informix database** – doing a Test Query in Job Setup works but not during scanning or indexing
- Network Edition: **Renaming a batch** generates "Failed to update batch information on server." error
- Network Edition: On some PC environments - 'Failed to lock setups' error after long delay of "Synchronizing Setups...." message
 - Very slow response when attempting to get into Job Setup, Page Setup, or User Setup