

Capture Pro Software FTP Server System Output

Overview

The Capture Pro Software FTP server will transfer batches and index data (that have been scanned and output to the local PC) to an FTP location accessible from the local PC.

The Capture Pro Software FTP server consists of 2 parts:

1) Capture Pro Software System Output Format

DLL Name: BOF_FTP.dpl
System Output Format Name: FTP Upload

2) FTP Server Program

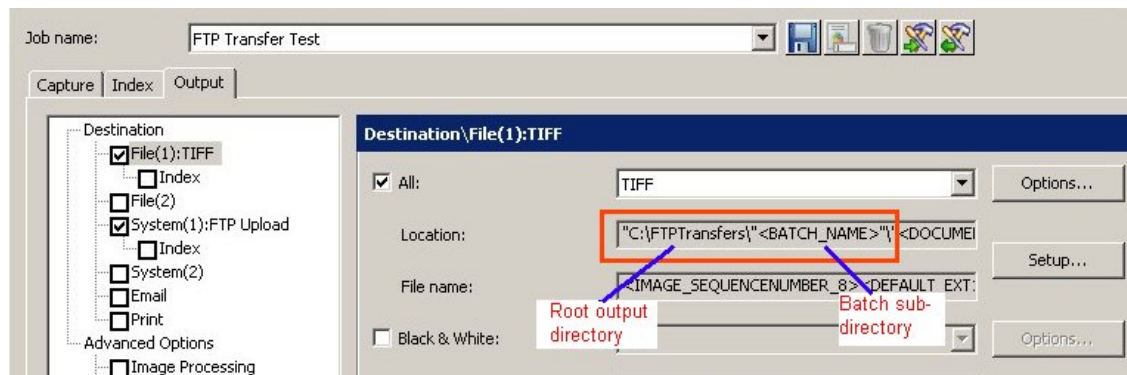
EXE Name CP_FTPServer.exe
Program Name Capture Pro Software FTP Server

Note that these components are automatically installed with Capture Pro Version 2.0 or later. They can also be manually installed by downloading and running the self-installer from the System Output Destinations web page, in the “FTP Upload” section, located here:

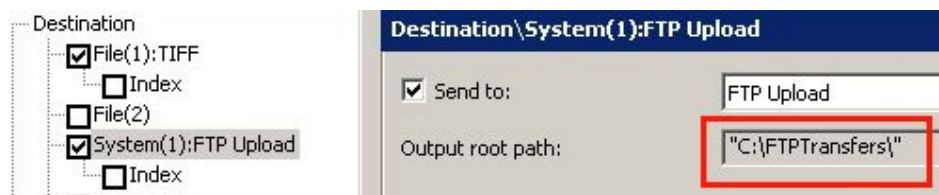
www.kodak.com/go/kcsftp

Setting up the Job

a) The Capture Pro Software Job must first be configured for **File (1)** output. The output configuration must include a root output location and a batch sub-directory (named by the Batch Name). The contents (images and index data) to be transferred via FTP must exist in the batch sub-directory.



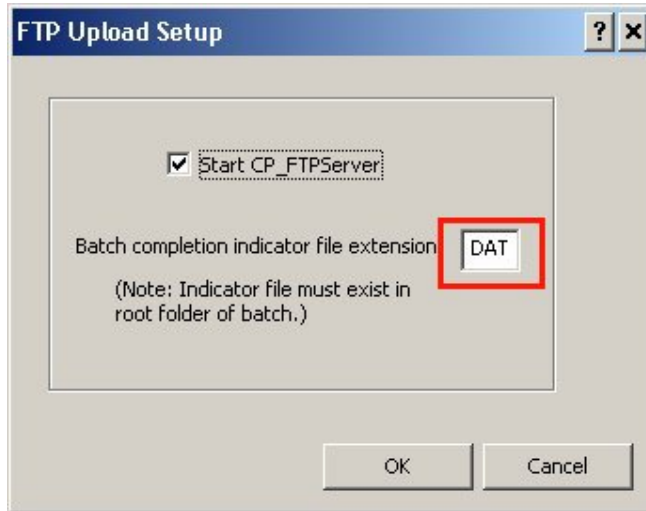
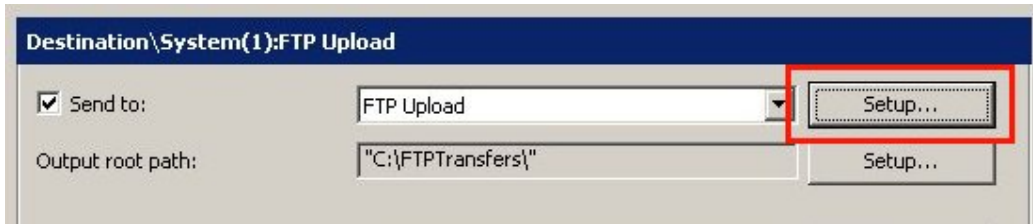
b) Next the Job must be also be configured for **System (1)** output and the output format called “FTP Upload” must be selected.



The **Output root path** setting should be the same as the File (1) output directory location (top level directory only) for the output batches. The CP_FTP Server program will always

assume the output batches to be transferred are in a sub-folder named as the Batch Name (e.g., Batch001) under the Output root path.

c) Click on the “Setup” button to configure the options for FTP Upload:



Option

Start CP_FTPServer

Batch Completion Indicator File extension

Comment

If checked the Capture Pro Software FTP server program will be started, if necessary, when a batch is output.

The Batch Completion Indicator File is created as part of your File(1) output in the batch subdirectory. When configuring the File(1) output for a job, it will be one of the index files (Batch, Document, or Image) that can be created.

This file will be uploaded **after** the batch or ZIP file FTP upload is complete. Applications can be written to watch for a file of this extension to be uploaded to the FTP site, indicating that the FTP transfer is finished. In the “FTP Upload Setup” dialog, specify the extension of the file.

The FTP Upload writes “trigger” files to signal the Capture Pro Software FTP Server program to transfer the batches that were output to the File (1) location. The trigger file path is fixed and is **<Output root path>\FTPTrigger**. In the example above the trigger file path would be “C:\FTPTransfers\FTPTrigger”.


Note: You must create this directory as part of configuring the FTP Server program (see below).

Capture Software FTP Server Configuration

Before outputting batches, the Capture Software FTP Server must be configured:

- Navigate to the Program Files directory where Capture Pro Software is installed (by default this will be C:\Program Files\Kodak\Capture Pro).
- Run the **CP_FTPServer.exe** program.
- The program must be setup via the **File->Configuration** menu option as follows. When you first run the FTP Server program it will automatically start up with this configuration screen:

Option	Comment
FTP Site	FTP site to which the batch (images and index data) should be transferred
User name	User to connect to the site as
Password	User password for connection
Port ID	The TCP/IP port used by the FTP server to communicate. The default is “21” and is pre-filled.
Initial Folder	The subfolder from the root of the FTP site where the batch will be stored.

Password protect ZIP file	If checked, the generated ZIP file will be encrypted with the password entered. This option will only be enabled if the “Zip batch before send” option is enabled.
Password	Password used to encrypt the ZIP file.
Delete batch after successful send	If checked, the source batch will be deleted after it has been successfully sent to the FTP site
Create batch folder	If Checked, the batch or ZIP file will be created in a folder with the same name as as the batch on the FTP server. If this is not checked, the batch or ZIP file will be created in the “Initial Folder” as configured.
Auto start	If Checked, the program will start polling automatically when first started.
Zip batch before send	Disabling this option will just output the Batch folder and its contents directly to the FTP site.
Connection retry attempts	Number of times to try the connection to the FTP site.
Poll frequency	Duration between checks for trigger files.
Trigger file path	Path in which to check for trigger files. This path must include a sub-directory called FTPTrigger under the Output root path as defined in Job setup. Click on the  button to navigate to the Output root path and create the FTPTrigger folder.
Trigger file extension	Extension of trigger files to look for. Will default to trg and cannot be modified.
Working folder	This is where the ZIP files are created on the local PC before being transferred to the FTP site. Will default to the user’s Temp folder and cannot be modified.

Note:

The settings for the Capture Pro FTP Server program are saved in the Registry under the following key:

HKLM\Software\Eastman Kodak Company\CP_FTP

The user who is outputting batches must have read/write access to this key.

Troubleshooting the FTP Server

If an error occurs transferring the output batch to the FTP site, the Capture Pro Software FTP Server will log the details of the error in a log file called **CP_FTPServer.log**. The log file will be located in the Program Files directory where Capture Pro Software is installed.

