

## Installation Instructions for the *Kodak Enhanced Printer Accessory* for use with *Kodak i5000 Series Scanners*

Following are instructions for installing the *Kodak Enhanced Printer Accessory* for the *i5000 Series Scanners*. See the *User's Guide* for procedures on how to use this accessory.

The *Kodak Enhanced Printer Accessory* includes:

### Front only

- 1 Upper imaging guide
- 1 Upper flippable background accessory
- 1 Drainage strip
- 1 Printer position/instruction label
- 1 Set of ink blotters

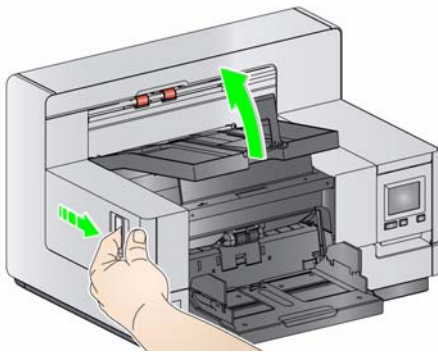
### Front and/or Rear

- 2 Enhanced Printer carriers
- 1 Enhanced Printer black ink cartridge
- 2 Printed circuit board accessory
- 1 screwdriver

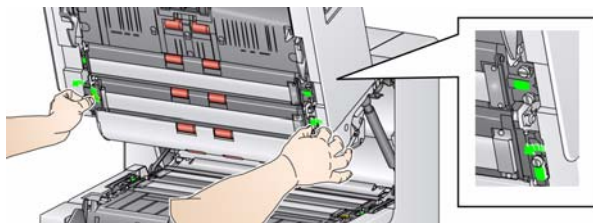
### Front printer installation

Before you begin be sure the scanner is turned off and unplugged.

1. Open the scanner cover.

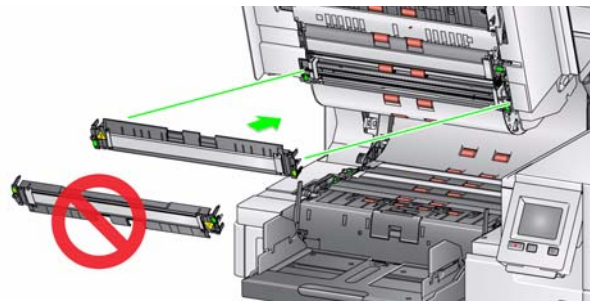


2. Loosen the thumbscrews on each end of the upper imaging guide and remove it from its position

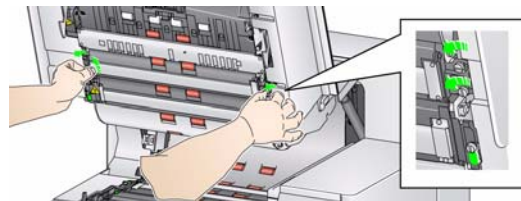


3. Install the Enhanced Printer imaging guide and tighten the screws to secure the imaging guide. *Do not over-tighten.*

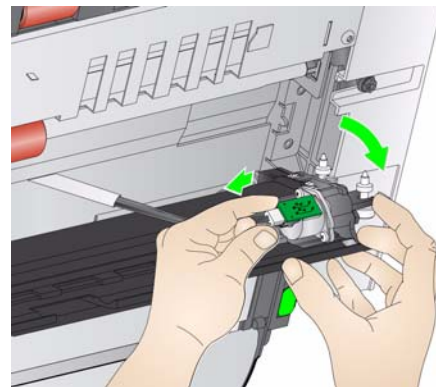
NOTE: Be sure to install the upper imaging guide in the correct orientation.



4. Loosen the upper flippable background accessory. Use the screwdriver provided to loosen all four thumbscrews.

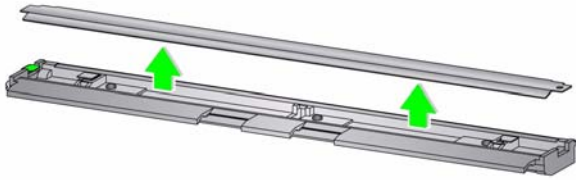


5. Unplug the connector to release and remove the flippable background.

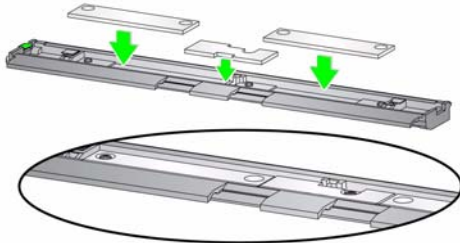


6. Install the flippable background by connecting the cable and aligning the springs on the end of the flippable background. Tighten the thumbscrews in place. *Do not over-tighten.*

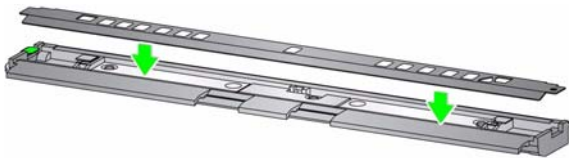
7. Verify that the flippable background moves freely up and down.
8. Remove the magnetic black strip from the base of the scanner.



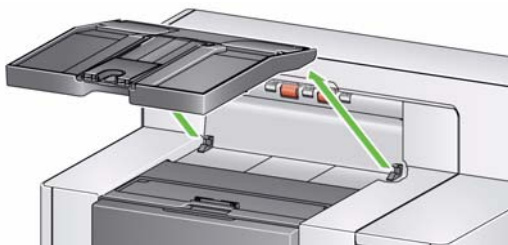
9. Install the ink blotters.



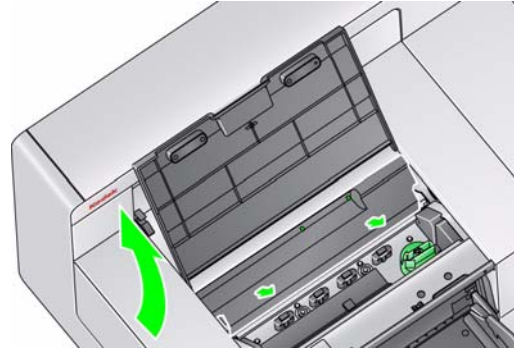
10. Install the drainage strip in place of the black strip that was removed in Step 8.



11. Clean the imaging guide and flippable background by wiping it with a soft, lint-free cloth.
12. Close the scanner cover and remove the output tray.

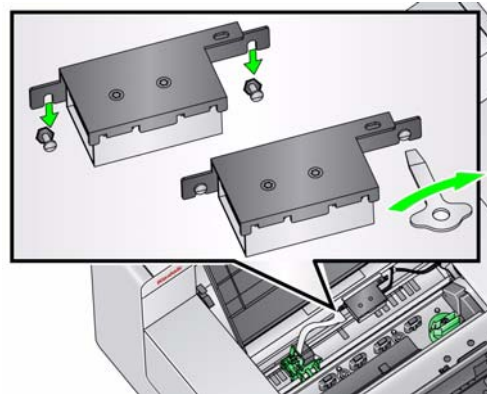


13. Open the printer access cover and remove the printer cover.

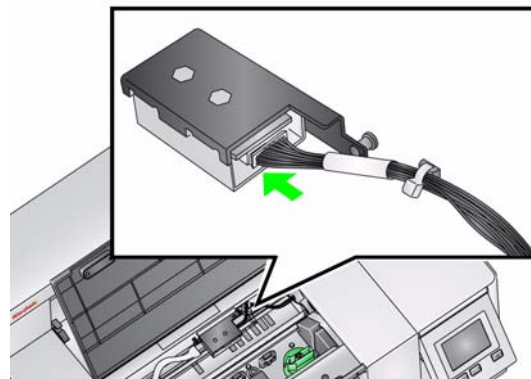


NOTE: The printer cover will not be reinstalled.

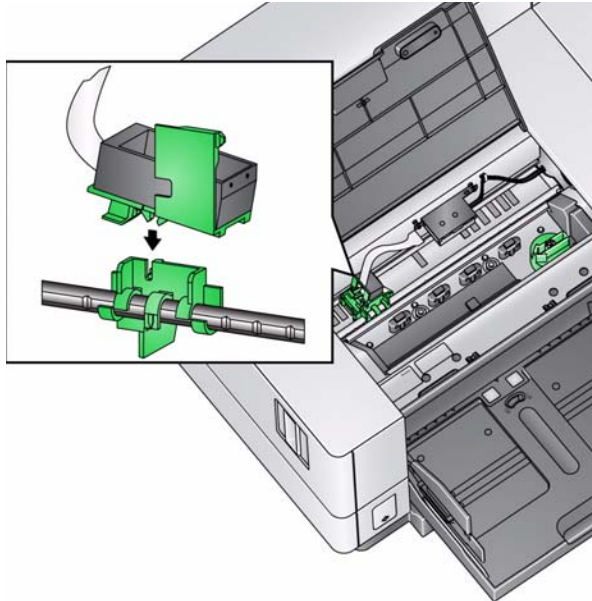
14. Loosen (but do not remove) the two screws and install the printer circuit board accessory by placing it over the two screws and tighten the screws as shown.



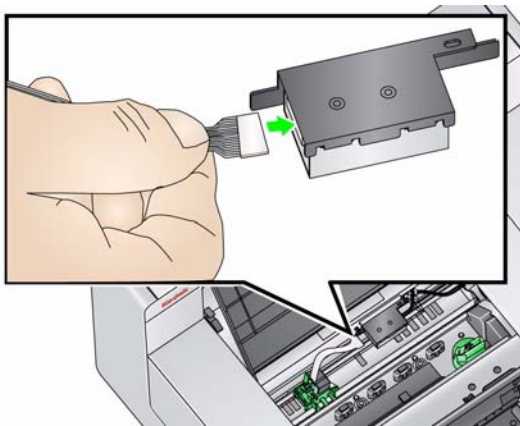
15. Connect the printer cable to the right side of the printer circuit board accessory.



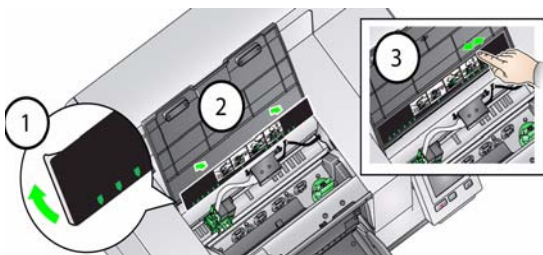
16. Snap the Enhanced Printer carrier onto the green carrier as shown.



17. Connect the printer cable from the printer carrier to the left side of the printer circuit board. Be sure the copper side of the printer cable is facing down.

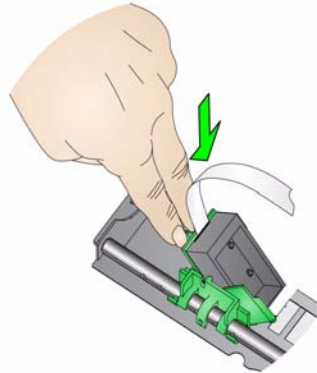


18. Align and adhere the printer position/instruction label on the inside of the printer access cover as shown.

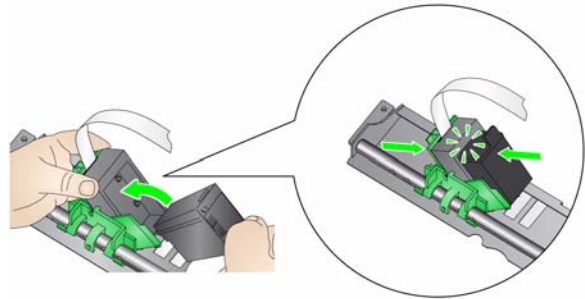


19. Open the ink cartridge package and remove the tab from the new ink cartridge.

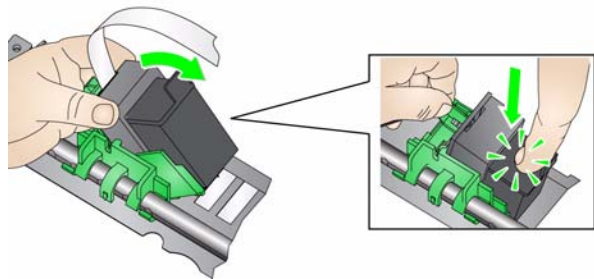
20. Push down on the printer carrier tab to rotate the printer carrier up.



21. Snap the ink cartridge into the printer carrier as shown.

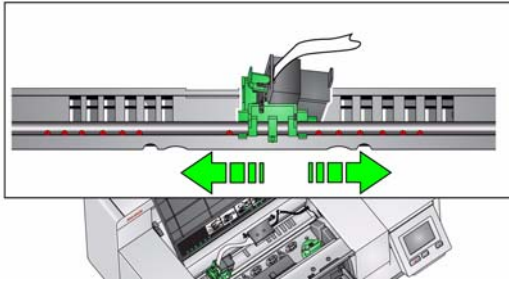


22. Rotate the printer carrier up and snap the ink cartridge in place.





- Slide the printer carrier into the desired print position. See the User's Guide, *Chapter 4, Document Printing*, for information on changing the print positions.

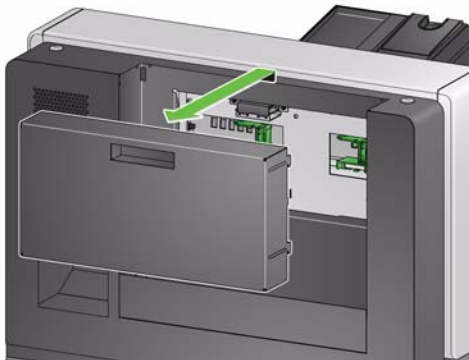


- Close the printer access cover and reinstall the output tray.
- Restart the scanner and scanning application.
- Run a print test. See the section entitled, "Running a Print test" in Chapter 4 of the User's Guide.

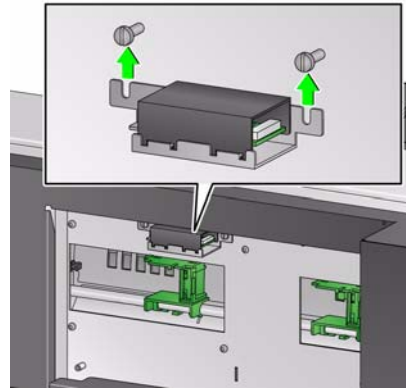
#### Rear printer installation (i5850 Scanner only)

NOTE: The printer carrier/ink cartridge can be installed on the left or right side depending on where you want to print.

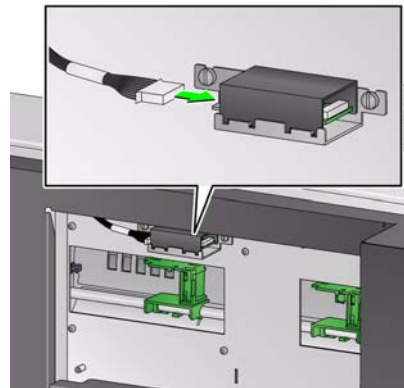
- Lift and remove the rear cover.



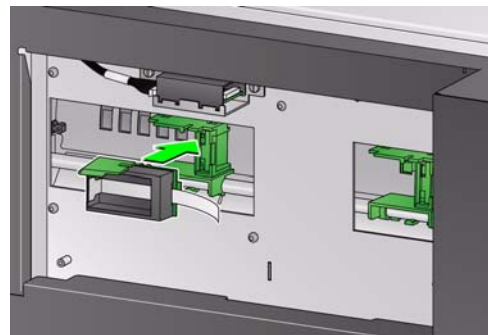
- Loosen (but do not remove) the two screws and install the printer circuit board accessory by placing it over the two screws and tighten the screws as shown.



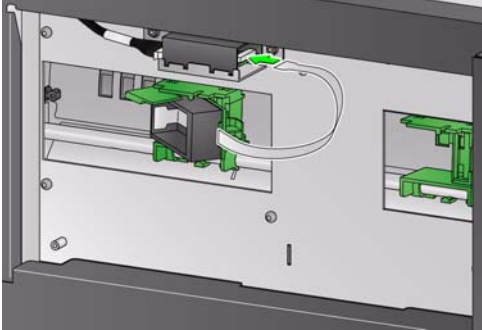
- Connect the printer cable to the left side of the printer circuit board accessory.



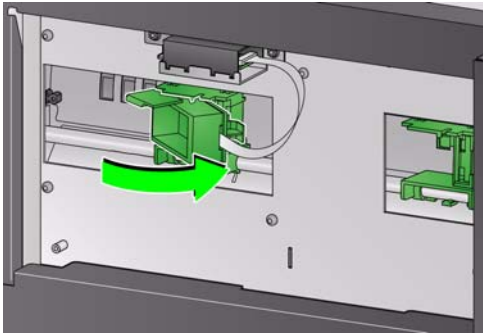
- Snap the Enhanced Printer carrier onto the green carrier as shown.



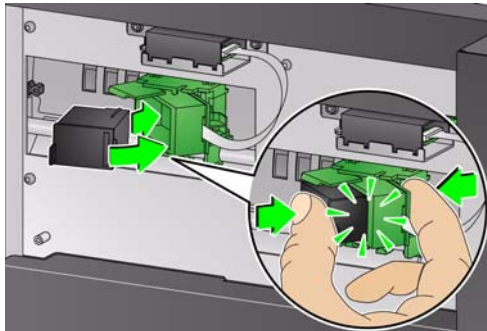
5. Connect the printer cable from the printer carrier to the right side of the printer circuit board. Be sure the copper side of the printer cable is facing up.



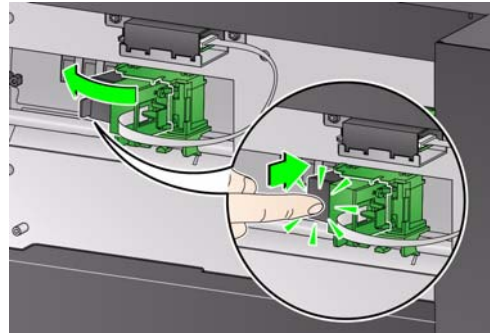
6. Open the ink cartridge package and remove the tab from the new ink cartridge.
7. Rotate the printer carrier to the right.



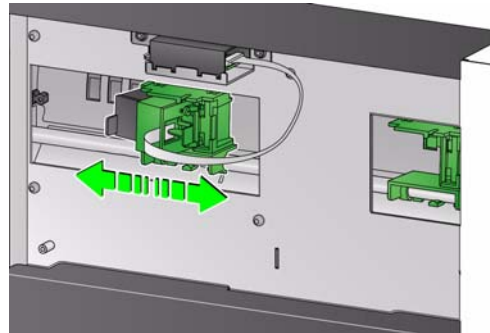
8. Snap the ink cartridge into the printer carrier as shown.



9. Push down on the printer carrier tab to rotate the printer carrier to the left.



10. Slide the printer carrier into the desired print position. See the User's Guide, *Chapter 4, Document Printing*, for information on changing the print positions



11. Replace the rear cover.

#### NOTES:

- Save all the parts that you removed (e.g., upper imaging guide, upper flippable background, black strip and printer cover) in the event you want to remove the imprinter at a later time.
- **Ink cartridge disposal:** consult the Hewlett-Packard website for recycling printing supplies or disposing of the ink cartridges according to local regulations.
- When both the front and rear printers are installed, you can only have one ink cartridge installed. An error will occur if an ink cartridge is in both printers.

Kodak Alaris Inc.  
2400 Mount Read Blvd.  
Rochester, NY 14615

© 2014 Kodak Alaris Inc. All rights reserved

The Kodak trademark and trade dress are  
used under license from Eastman Kodak Company

**Website:** [www.kodakalaris.com/go/docimaging](http://www.kodakalaris.com/go/docimaging)